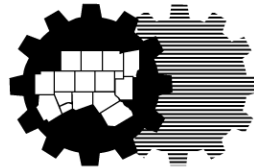




# Transit-Oriented Development Task Force

January 17, 2017



**North Central Texas  
Council of Governments**

# Meeting Outline

**NCTCOG Transit-Oriented Development (TOD) Data Collection Updates**

**Federal Transit Administration (FTA) TOD Planning Pilot Grant**

**Panel Discussion - Coordinating to Catalyze TOD: The Transit Agency Perspective**

Denton County Transportation Authority (DCTA)

Fort Worth Transportation Authority (FWTA)

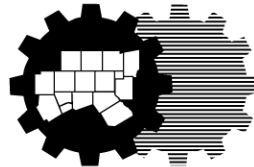
Dallas Area Rapid Transit (DART)





# NCTCOG TOD Data Collection Update

Overview of upcoming data collection products



**North Central Texas  
Council of Governments**

# TOD Data Collection - Scope

## Active Stations

2014

75 stations

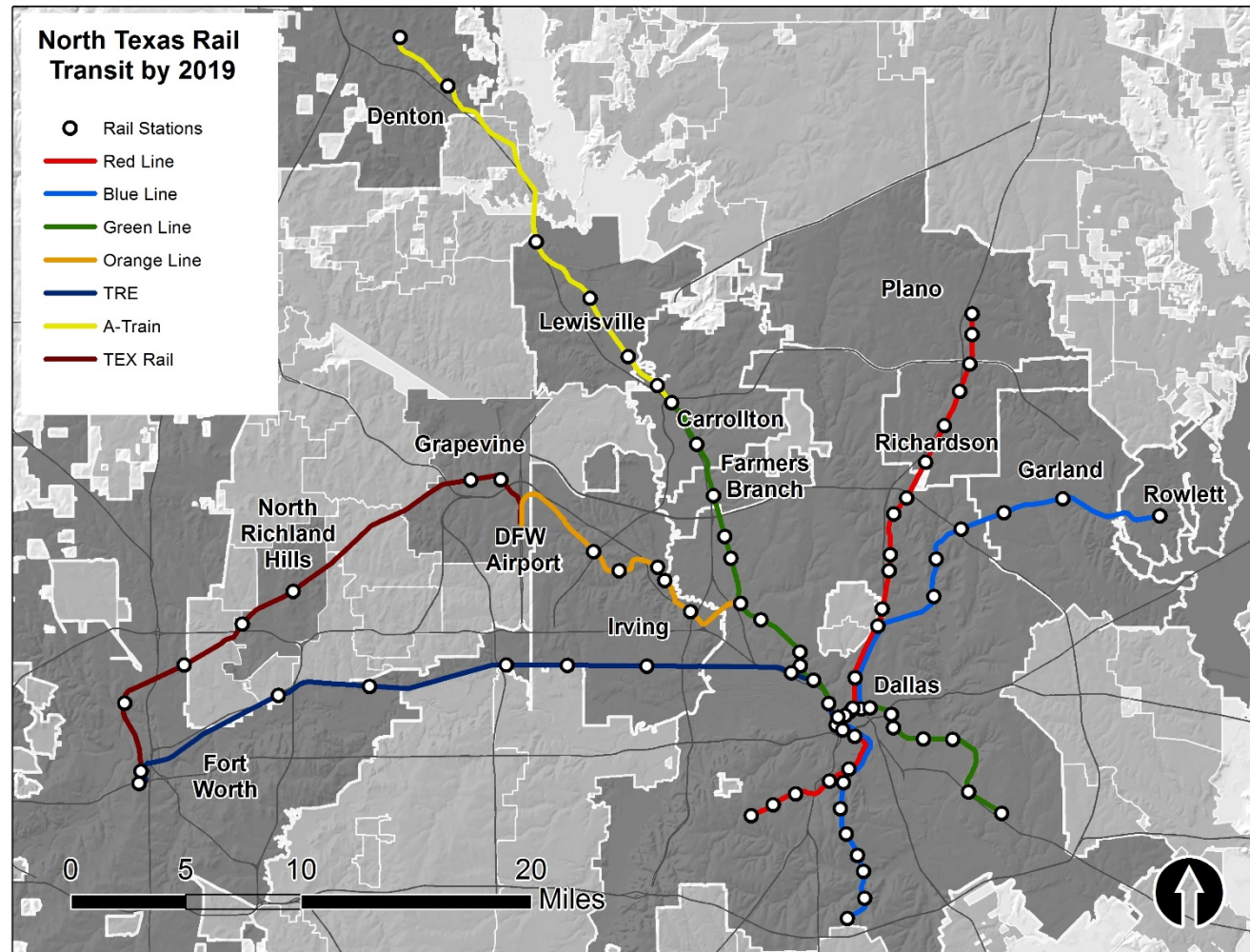
2017

77 stations

2019

84 stations

(7 new TEX Rail)



# Data Collection: Rail Station Area Fact Sheets

Station attributes and average ridership

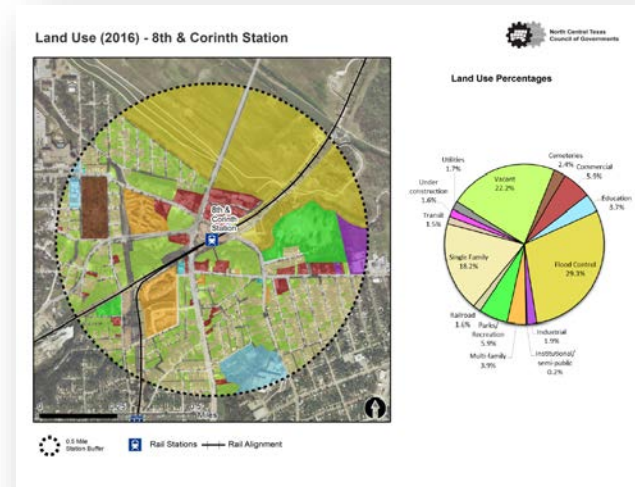
Current demographics for station area (1/2 mile radius)

Employment Forecast

Access Mode to Station

Land Use and Zoning maps

Bicycle and Pedestrian Routes to Rail maps



Rail Station Fact Sheet – 8th & Corinth Station			
<strong>Station Characteristics<sup>1</sup></strong>		<strong>Station Area Characteristics (1/2 mile radius)</strong>	
Address	1740 E. 8th St.	<strong>Demographics<sup>2</sup></strong>	
City	Dallas	Total Population	4,543 <sup>3</sup>
Agency	Dallas Area Rapid Transit	Population Density (pop/sq. mile)	2,367
Rail Line(s)	Red Line, Blue Line	Average Median Age	28
Corridor	Oak Cliff (OC)	Average Median Income	\$19,904.80
Year Opened	1996	<strong>Housing<sup>2</sup></strong>	
Park & Ride Spaces	196	Total Housing Units	1,723
<strong>Ridership<sup>3</sup></strong>		Housing Density (units/sq. mile)	894
2015 Avg. Weekday	1,687	Percent Occupied	83%
2015 Avg. Saturday	920	Percent Owner-Occupied	36%
2015 Avg. Sunday	732	Percent Renter-Occupied	64%
<strong>2014 On-Board Transit Survey: Access Mode to Station<sup>2</sup></strong>		<strong>Commute To Work<sup>3</sup></strong>	
Bike	1.0%	Percent Automobile	86.5%
Drive Alone	4.6%	Percent Drive Alone	65.0%
Carpool	1.0%	Percent Carpool	21.5%
Walk	34.2%	Percent Transit	7.8%
Drop off	12.8%	Percent Bike	0.0%
Other	0.0%	Percent Walk	3.5%
Transit Transfer	46.4%	Percent Other	1.2%
<strong>Station Area Plans and Studies</strong>		Percent Work from Home	1.0%
Title	N/A	Percent Zero-Vehicle Households	13.5%
Publisher		<strong>Traffic Survey Zone 2017 Employment Forecast<sup>2</sup></strong>	
Year		Total Jobs	1,155
Web location		Job Density (jobs/ sq. mile)	711

Sources: 1. Dallas Area Rapid Transit (DART), 2. NCTCOG, 3. U.S. Census American Community Survey 5 Year Estimates (2010-2014) by block group





# Data Collection: Rail Station Area Fact Sheets

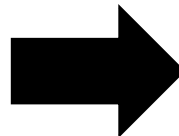
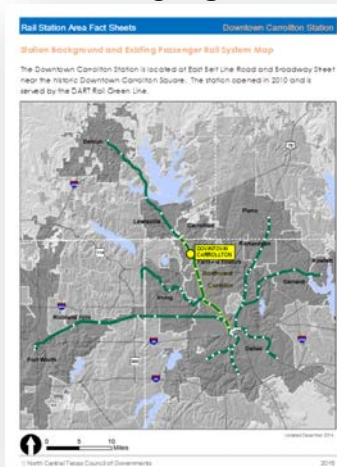
## New stations in the 2017 Fact Sheets

2 stations: DART Blue Line – Camp Wisdom and UNT Dallas

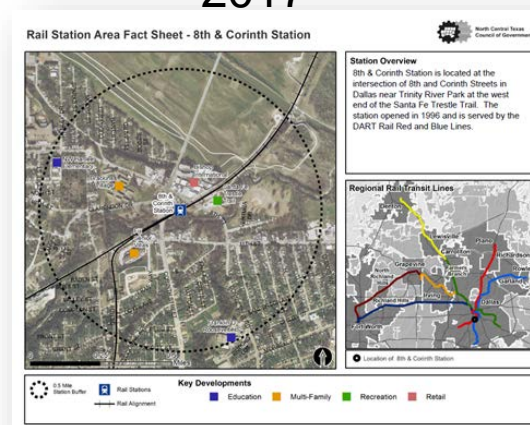
7 stations: TEX Rail (currently under construction)

82 total stations active or under construction in the fact sheets  
(excludes the two airport terminal stations)

2015



2017



# Data Collection: Rail Station Area Fact Sheets

## New data in the 2017 Fact Sheets

2010-2014 5-year American Community Survey data by block group

Mobility 2040 Employment forecast data

2014 Regional On-Board Transit Survey data – Station access

Revised land use map with added detail

Update to existing and planned bicycle routes map



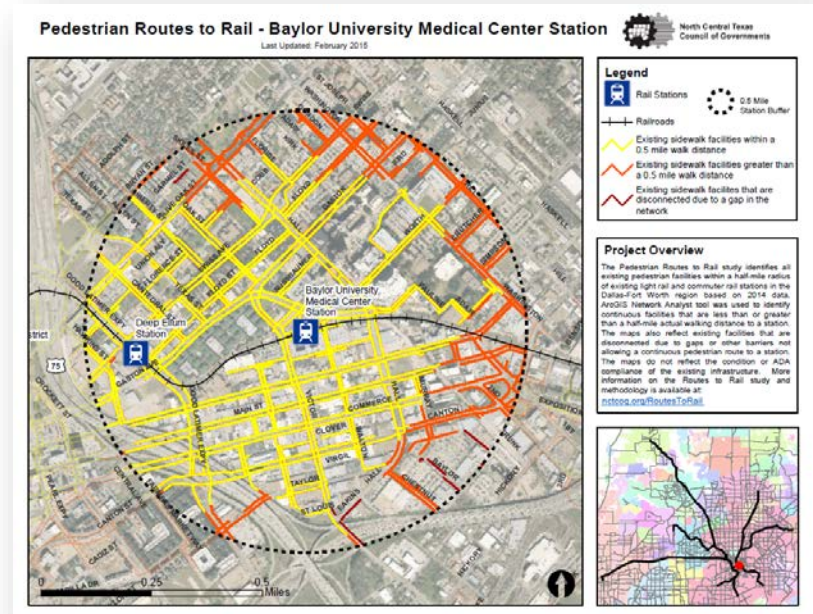
# Data Collection: Rail Station Area Fact Sheets

## Next Steps

February 10, 2017 – Release complete drafts

February 28, 2017 – Feedback due

March 6, 2017 – Final fact sheets posted online



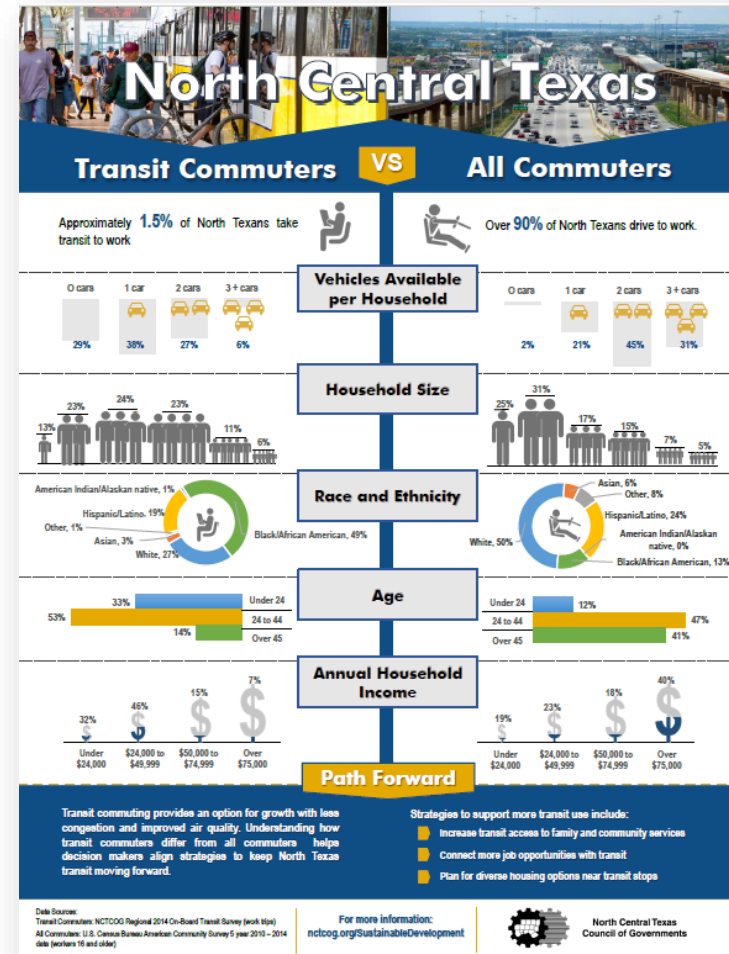


# Data Collection: Infographics

## On-board Transit Survey Analysis

Who are North Texas transit commuters?

How do they compare to the rest of the region's commuters?



# TOD Data Collection

## Future Work

Finalize Rail Station Fact Sheets and post online

Continued development of new transit survey infographics

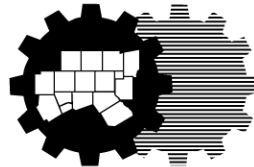
Refine development and appraisal district data to develop better station area indicators





# Federal Transit Administration: TOD Planning Pilot Grant

Successful application, partnership, and regional opportunity



**North Central Texas  
Council of Governments**

# FTA TOD Planning Pilot Grant

April 2016 – FTA announced \$20.49 million for TOD planning associated with FTA's Fixed Guideway Capital Investment Grants (CIG) Program



## Requirements:

Comprehensive planning work to increase development, ridership, and multimodal access

Must be associated with entire corridor of existing FTA CIG program project

Partnership must be in place



# FTA TOD Grant

## Partnership

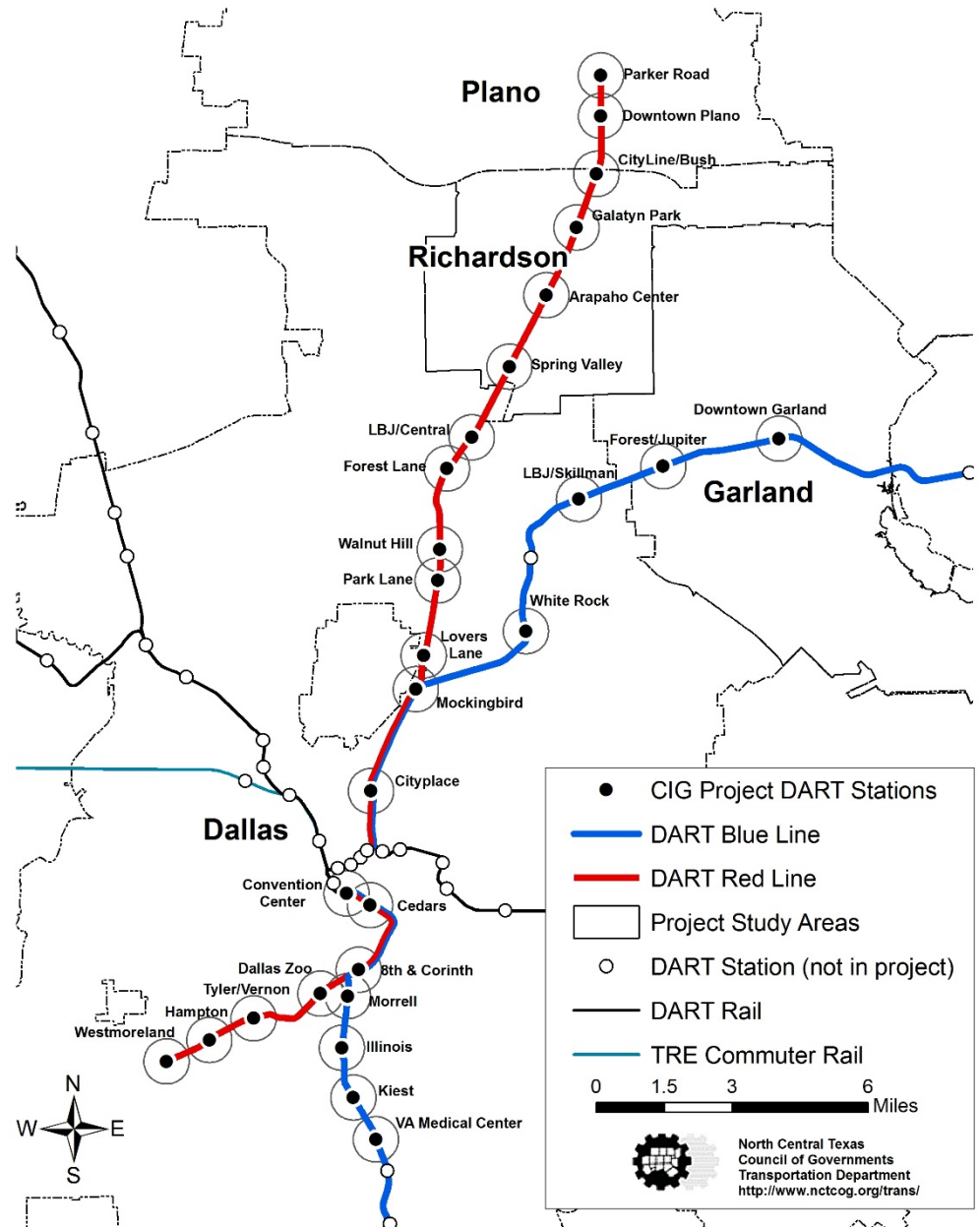
NCTCOG, DART, Cities of:  
Dallas, Garland, Plano,  
and Richardson

## Transit Project

DART Red and Blue Lines  
Platform Extensions (28  
stations built before 2004)

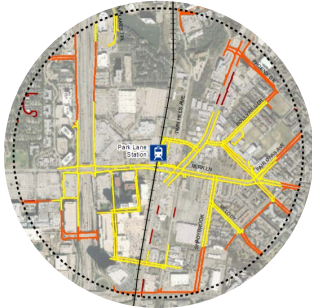
## Application

\$1.4 million with \$350,000  
local match





# FTA TOD Grant – Preliminary Scope



Last Mile Routes to Rails Connectivity



TOD Parking Utilization Study



TOD Resident / Employee Survey



# FTA TOD Grant

## Deliverables

Preliminary engineering and cost estimates for infrastructure improvements around select stations

Regional Policy Recommendations

Parking Management

Overcoming barriers to ridership

Private sector input of needs

Template for the North Texas Region

## Next Steps

Finalize contract with FTA

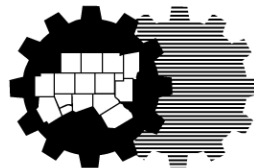
Work to start in fall of 2017





# Coordinating to Catalyze TOD: The Transit Agency Perspective

Panel discussion on joint development and best practices in  
coordination



**North Central Texas  
Council of Governments**

# NCTCOG – TOD Program

Karla Weaver, AICP

Program Manager

[kweaver@nctcog.org](mailto:kweaver@nctcog.org) (817) 608-2376

Shawn Conrad

Senior Transportation Planner

[sconrad@nctcog.org](mailto:sconrad@nctcog.org) (817) 704-5695

Travis Liska

Transportation Planner

[tliska@nctcog.org](mailto:tliska@nctcog.org) (817) 704-2512

[nctcog.org/TOD](http://nctcog.org/TOD)

