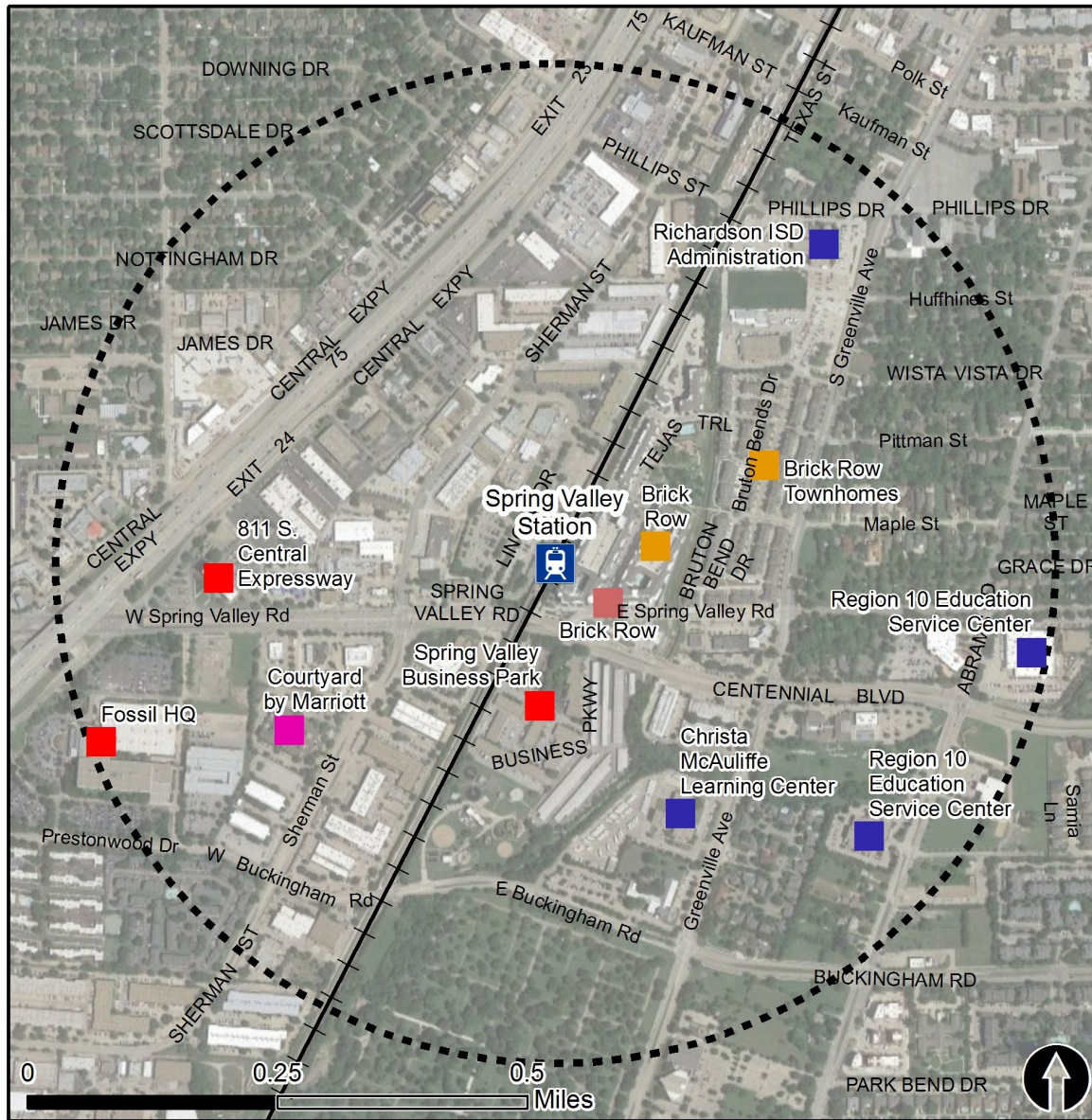


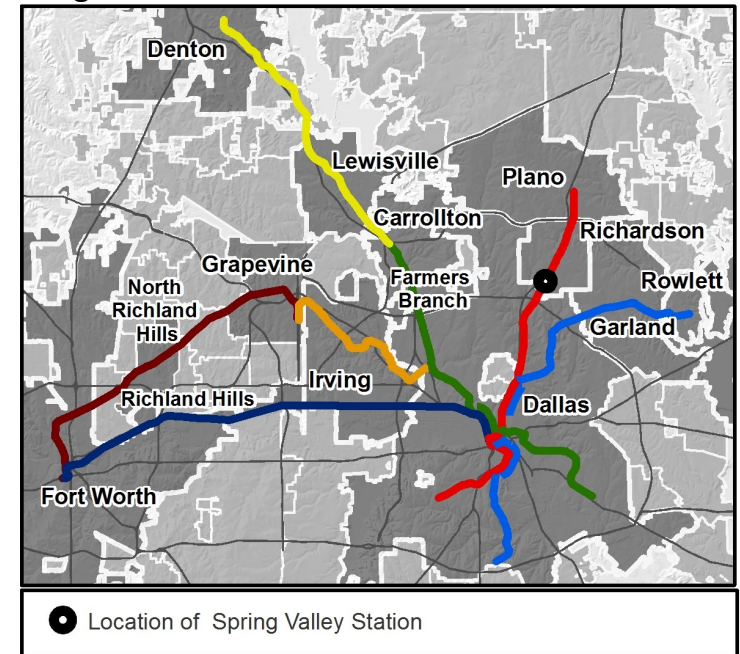
# Rail Station Fact Sheet – Spring Valley Station



## Station Overview

Spring Valley Station is located near the intersection of West Spring Valley Road and Lingco Drive in Richardson. The station opened in 2002 and is served by the DART Rail Red Line and selected weekday rush hour Orange Line trips.

## Regional Rail Transit Lines



● Location of Spring Valley Station

0.5 Mile Station Buffer Rail Stations Rail Lines	<b>Key Developments</b>				
	Education	Hotel	Multi-Family	Office	Retail

# Rail Station Fact Sheet – Spring Valley Station



## Station Characteristics<sup>1</sup>

Address	100 W. Spring Valley Road
City	Richardson
Agency	Dallas Area Rapid Transit
Rail Line(s)	Red Line, Orange Line
Corridor	North Central (NC)
Year Opened	2002
Park & Ride Spaces	393

## Ridership<sup>1</sup>

2015 Avg. Weekday	1,351
2015 Avg. Saturday	626
2015 Avg. Sunday	462

## 2014 On-Board Transit Survey: Access Mode to Station<sup>2</sup>

Bike	2.5%
Drive Alone	9.6%
Carpool	1.2%
Walk	43.1%
Drop Off	17.2%
Other	0.4%
Transit Transfer	26.1%

## Station Area Plans and Studies

Title	Spring Valley and Main Street Station Area Plans
Publisher	City of Richardson
Year	2003
Web Location	<a href="http://www.cor.net/todplans">http://www.cor.net/todplans</a>

## Station Area Characteristics (1/2 mile radius)

### Demographics<sup>3</sup>

Total Population	7,866
Population Density (pop/sq. mile)	2,500
Average Median Age	33
Average Median Income	\$50,579.57

### Housing<sup>3</sup>

Total Housing Units	3,621
Housing Density (units/sq. mile)	1,151
Percent Occupied	94%
Percent Owner-Occupied	36%
Percent Renter-Occupied	64%

### Commute To Work<sup>3</sup>

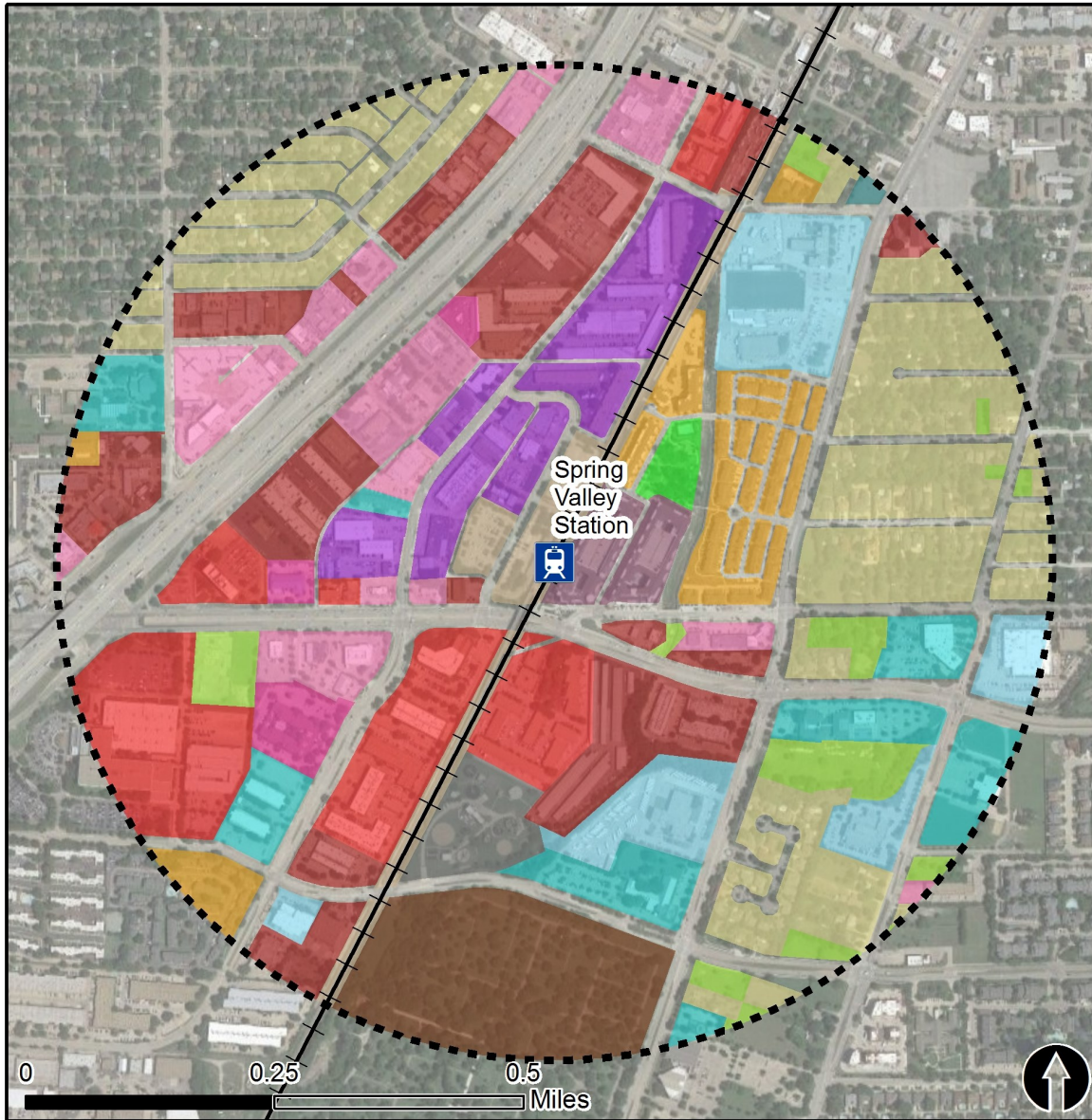
Percent Automobile	90.6%
Percent Drive Alone	81.5%
Percent Carpool	9.1%
Percent Transit	2.6%
Percent Bike	0.0%
Percent Walk	3.0%
Percent Other	1.1%
Percent Work from Home	2.8%
Percent Zero-Vehicle Households	5.0%

### Traffic Survey Zone 2017 Employment Forecast<sup>2</sup>

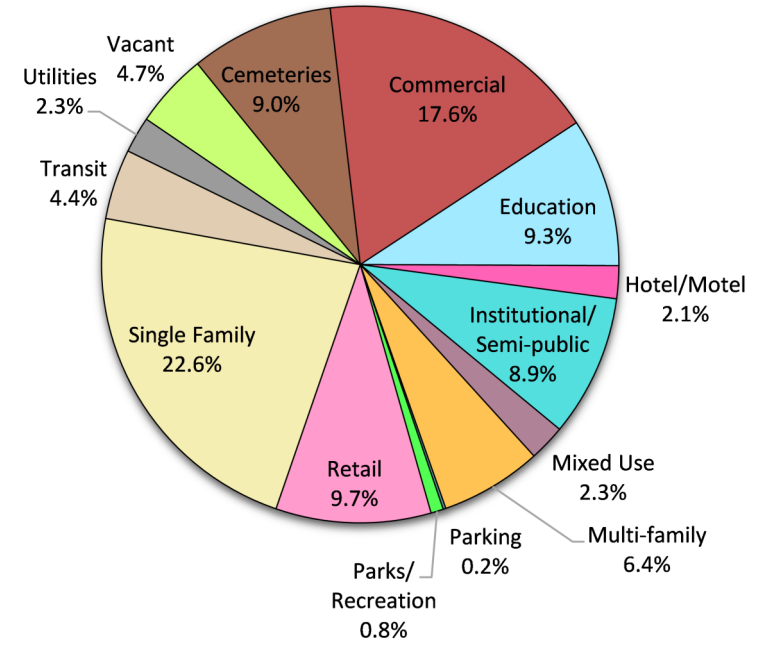
Total Jobs	11,615
Job Density (jobs/sq. mile)	3,993



# Land Use (2016) – Spring Valley Station



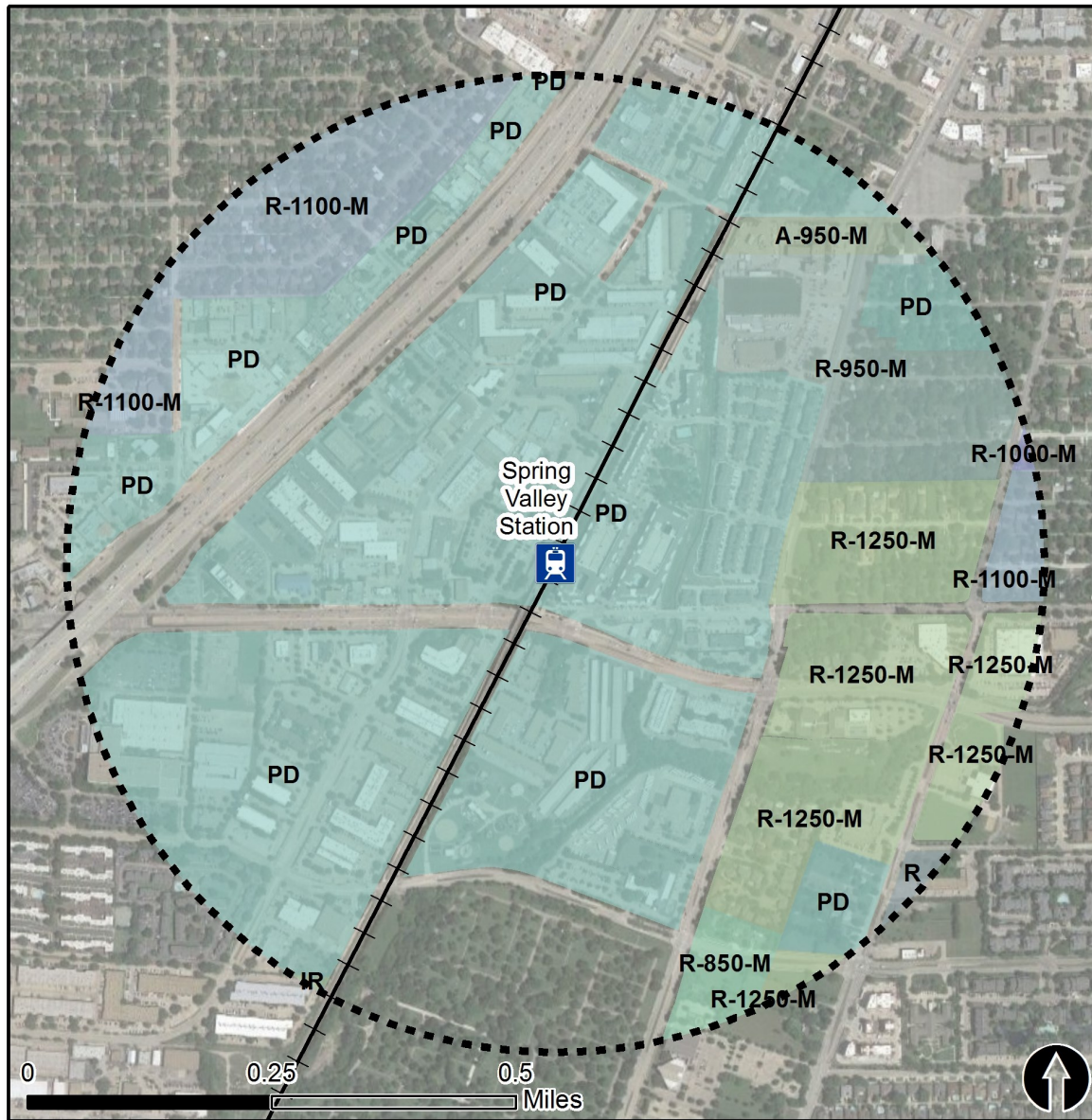
### Land Use Percentages



0.5 Mile Station Buffer

Rail Stations Rail Lines

# Zoning (2016) – Spring Valley Station



## Zoning Districts

- A-950-M – Apartment
- PD – Planned Development
- R – Retail
- R-850-M – Residential
- R-950-M – Residential
- R-1000-M – Residential
- R-1100-M – Residential
- R-1250-M – Residential
- R-2000-M – Residential

For more information on zoning, please visit the City of Richardson Development Services website at:

<https://www.cor.net/index.aspx?page=328>



0.5 Mile  
Station Buffer



Rail Stations



Rail Lines





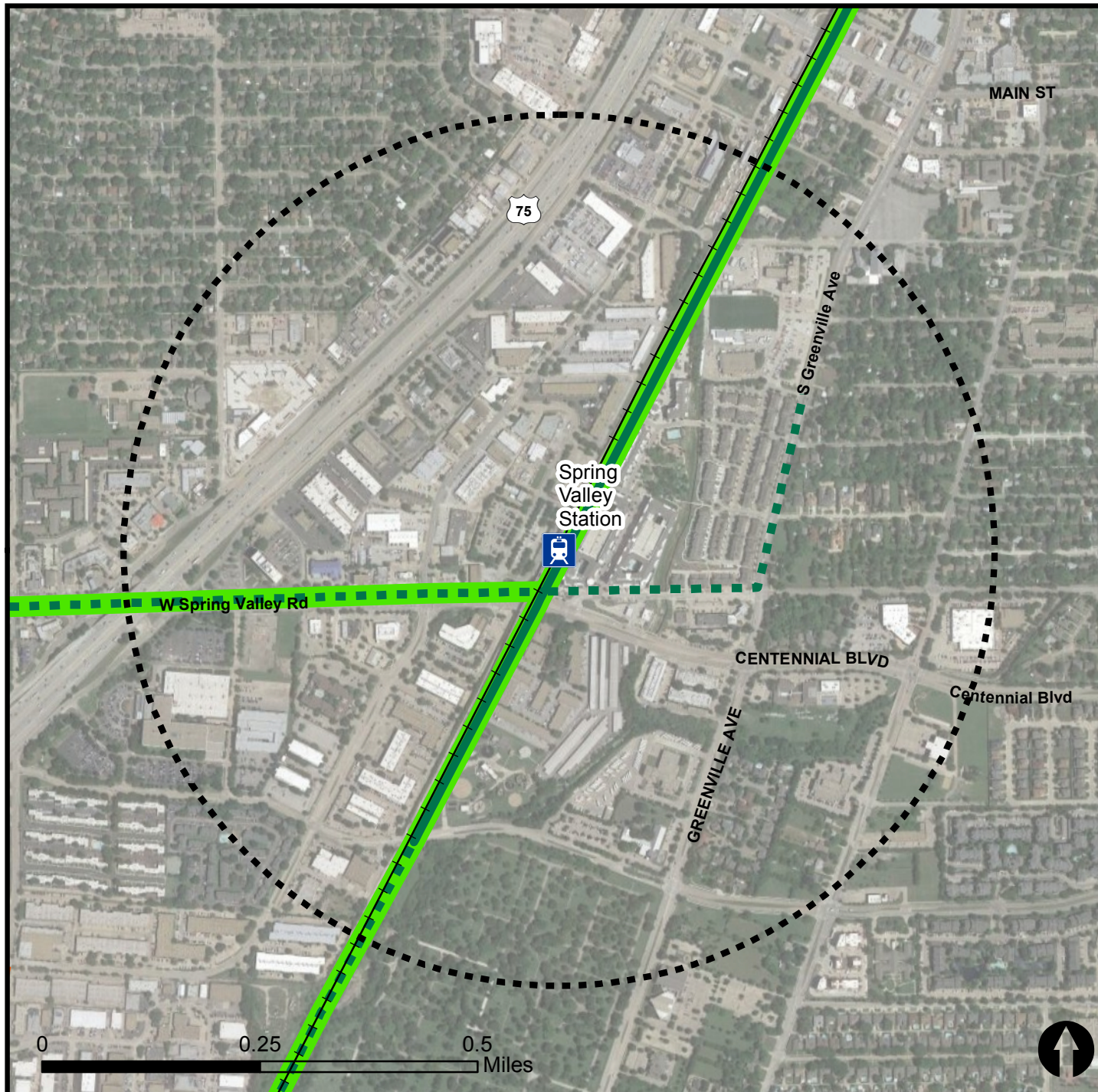


# Bicycle Routes to Rail - Spring Valley Station



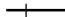





Last Updated: October 2016



North Central Texas  
Council of Governments



## Legend

-  Rail Stations
-  0.5 Mile Station Buffer
-  Rail Lines
-  On-Street Bikeway, Existing
-  On-Street Bikeway, Planned
-  2040 Veloweb
-  Off-Street Path, Existing
-  Off-Street Path, Planned

## Project Overview

The Bicycle Routes to Rail study identifies all existing and planned bikeways in proximity to existing or under-construction light rail and commuter rail stations in the Dallas / Fort Worth region based on 2016 data. The maps reflect off-street paths (trails) and streets designated by local adopted master plans for dedicated bikeways (e.g. bike lanes, cycle tracks) located on the street. In accordance with the Texas Transportation Code, bicyclists have a right to the road. As such, the map does not reflect other roadways around the station that may have signed bike routes or by state law may be used by bicyclists. More information about the Routes to Rail study and methodology is available at:

[nctcog.org/RoutesToRail](http://nctcog.org/RoutesToRail)

