

# Preventing Storm Water Pollution: *What We Can Do*

~Employee Training Series~  
Solid Waste Operations

PREPARED IN COOPERATION WITH THE Texas Commission on Environmental Quality AND  
U.S. ENVIRONMENTAL PROTECTION AGENCY

The preparation of this report was financed through grants from the  
U.S. Environmental Protection Agency through the Texas Commission on Environmental Quality.

# Solid Waste Operations

- By taking precautions in their daily activities, Solid Waste employees can help reduce water pollution.
  - Trash Collection Activities
  - Transfer Station/Drop Off Operations
  - Mulching Operations
  - Landfill Operations
  - Composting Operations

# Trash Collection Activities

- Try to identify and do not pick up hazardous wastes (flammables, toxics, explosives, etc.).

Examples include:

- used batteries
- solvents, fuels
- pesticides, herbicides
- fireworks, ammunition
- pool chemicals
- fluorescent bulbs



# Trash Collection Activities

- Try to identify and do not pick up liquid wastes.

Examples include:

- used motor oil
- paint
- antifreeze
- cleaning liquids
- cooking oil

- Notify residents of household hazardous waste collection / disposal opportunities.



# Trash Collection Activities

- Pick up spilled trash from around cans or bags.
- Notify residents of persistent problems with scattered trash.
- Watch the area around the hopper to avoid leaving litter behind.
- Pick up any material that falls from the truck during compaction.



# Trash Collection Activities

- Include spill kits on trash collection trucks and service vehicles.

- Kits could include:
  - broom
  - shovel
  - absorbents
  - pop-up pools.



# Trash Collection Activities

- Check vehicle frequently for leaking fluids and notify supervisor of significant leaks.
- Contain spills using absorbents and take steps to stop the leak if possible.
- Immediately clean up spills to minimize safety hazards and deter spreading.



# Trash Collection Activities

- Make certain that hopper drain plugs are always sealed during collection.
- Wash collection trucks only in facilities where the wash water drains to the sanitary sewer system or is collected and recycled.





# Transfer Stations & Drop Off Centers

- Look for hazardous or liquid wastes. Remove any of these materials and store in designated locations for proper disposal.
- Pick up all windblown litter and rubbish.



# Transfer Stations & Drop Off Centers

- Dry sweep litter and rubbish periodically, especially before expected rain or windy conditions.
- Use litter screens to catch windblown trash.
  - chain link fence
  - welded wire mesh fence
  - orange construction fencing



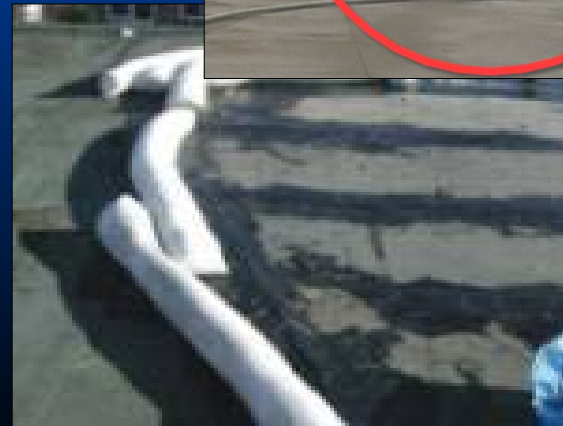
# Transfer Stations & Drop Off Centers

- Locate source of spills and prevent further spillage. Immediately clean spills using absorbents.
- Remove the absorbent materials promptly and dispose in accordance with procedures.



# Transfer Stations & Drop Off Centers

- Do not overfill collection receptacles.
- Conduct facility wash-down activities as directed by the supervisor.
- Do not hose down work areas that drain into storm sewers or drainage ways.
- Retain spills and prevent them from entering the environment.



# Transfer Stations & Drop Off Centers

- Make sure lids on bins and receptacle are closed, especially during rain events.
- Notify haulers and citizens on requirements to cover loads during transport.



# Pollution Prevention at Mulching Operations

- Remove trash and foreign materials from brush prior to grinding.
- Place trash and debris in covered containers.
- Use litter screens (fencing) to capture windblown trash.
- Mulch berms can be used to filter runoff from work area.



# Landfills and Composting Operations

- These operations will have specific SWPPP requirements governed by either a Multi-Sector General Permit or the facility's individual registration or permit.
- Follow all Best Management Practices, record keeping, training, and reporting requirements detailed in the facility permit.



# Preventing Storm Water Pollution: *What We Can Do*

*Protecting water quality requires  
that all employees do their part to  
prevent storm water pollution.*

