

Regional Ecosystem Framework

Advanced User Guide

There are three ways to access and interact with the Regional Ecosystem Framework (REF) based on different users' needs. The Interactive Viewer, Web Map Editor, and ArcMap Desktop methods are described below.

1. Interactive Viewer

The most basic way to view and interact with the REF is to use the Interactive Viewer. This allows the user to toggle layers on/off, adjust layer transparency, inspect elements, draw shapes on the map, and print generated maps.

[Interactive Viewer User Guide](#)

Link to the Interactive Viewer:

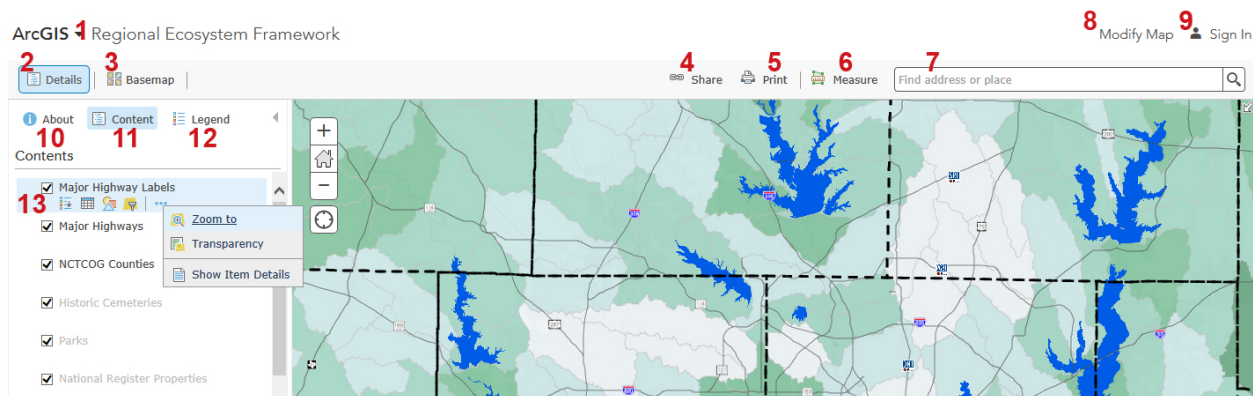
<http://nctcoggis.maps.arcgis.com/apps/webappviewer/index.html?id=629ea7bf1f5e4d93a38f857ebb1f2f1f>

2. Web Map Editor

If more control over the map layers is desired, users may access the REF via the ArcGIS online web map. Using this method allows users to adjust layer symbology, filter layers based on table values, configure pop-ups, adjust visibility range, and upload their own GIS layers onto the map.

Link to the online web map: <http://arcg.is/1kEYzpA>

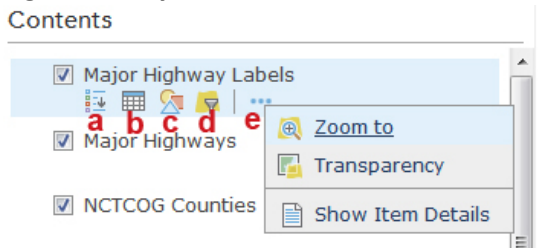
Figure 1: Web Map



1. ArcGIS/Home Drop-down – takes you to arcgis.com.
2. Details – Toggles left side menu.
3. Basemap – Allows users to select from a variety of base maps.
4. Share – Provides users with a link to the web map.

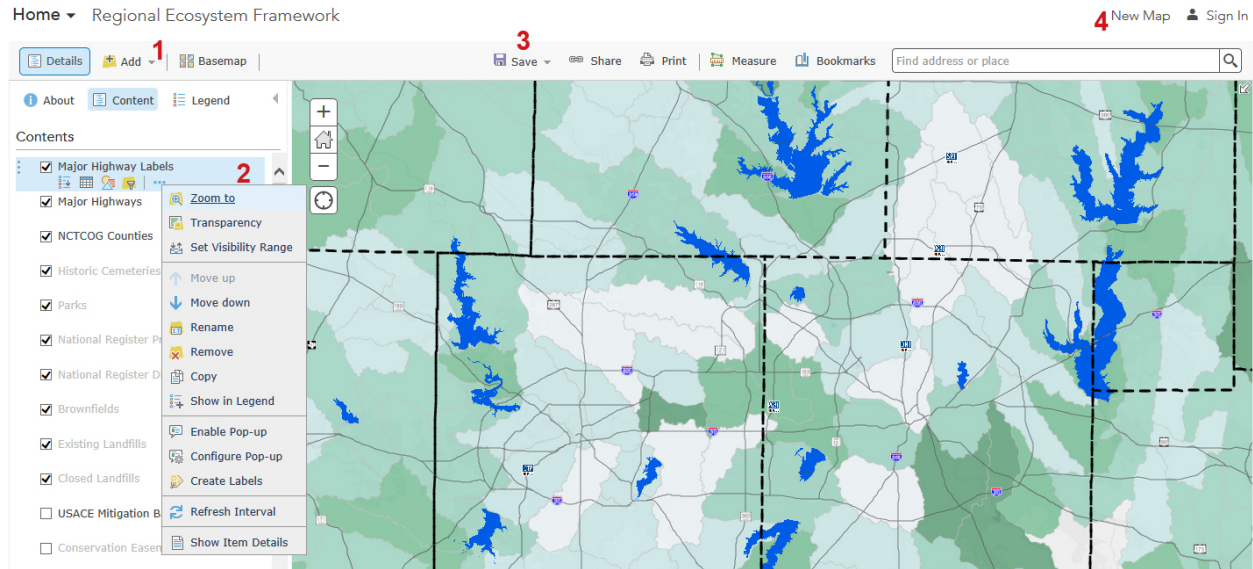
5. Print – Allows users to print their map as it appears in the viewport (for better printing options, please access the REF through the Interactive Viewer or ArcMap Desktop).
6. Measure – Allows users to measure area and distance in a variety of units.
7. Geo locator – Enter an address or set of coordinates to zoom to that location.
8. Modify Map – Clicking this button will enable more advanced controls in the content panel so that layers can be fully customized and new layers can be added to the map. You must also activate this option to be able to save the map if you have an Esri account. See Figure 2 for more details.
9. Sign In – If you have an Esri account (including the free version) you can save the map with all your edits.
 - a. Visit <https://www.arcgis.com/home/signin.html> to obtain an ArcGIS account.
10. About – Provides basic information about the map. Click “More Details...” to view the full description and service URLs for each layer.
11. Content – Lists all layers available in the map for editing.
12. Legend – Displays the map legend. Only layers that are currently visible in the viewport are displayed. You may need to zoom in to view the more detailed layers.
13. Layer – Check the box on the left to toggle a layer on/off. Icons left to right:

Figure 1b: Layer detail



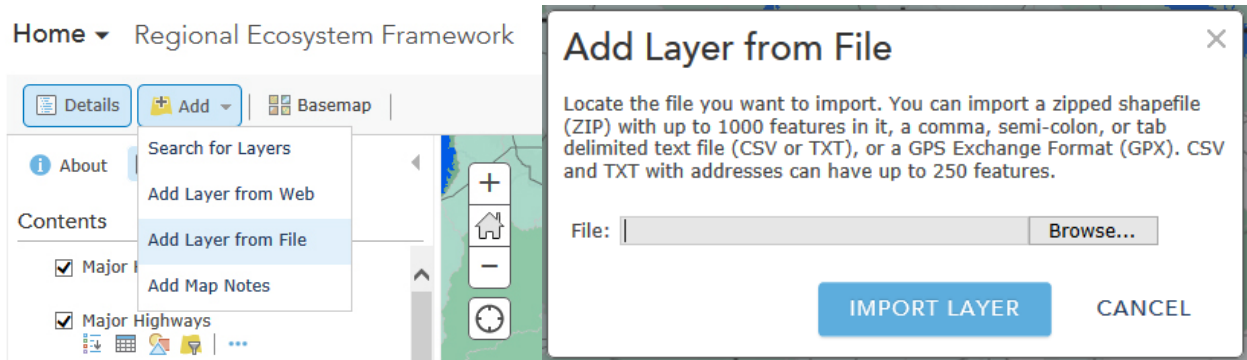
- a. Show/Hide Legend – displays legend details for that layer in the content window.
- b. Show Table – displays the data table for that layer.
- c. Change Style – opens options to edit the line/fill color and which attributes are used to symbolize.
- d. Filter – Opens dialog box to filter a layer based on attribute table values.
- e. ... - Displays the additional options Zoom To, Transparency, and Item Details (data dictionary).

Figure 2: How the Interface changes after you click “Modify Map” (Figure 1, #8)



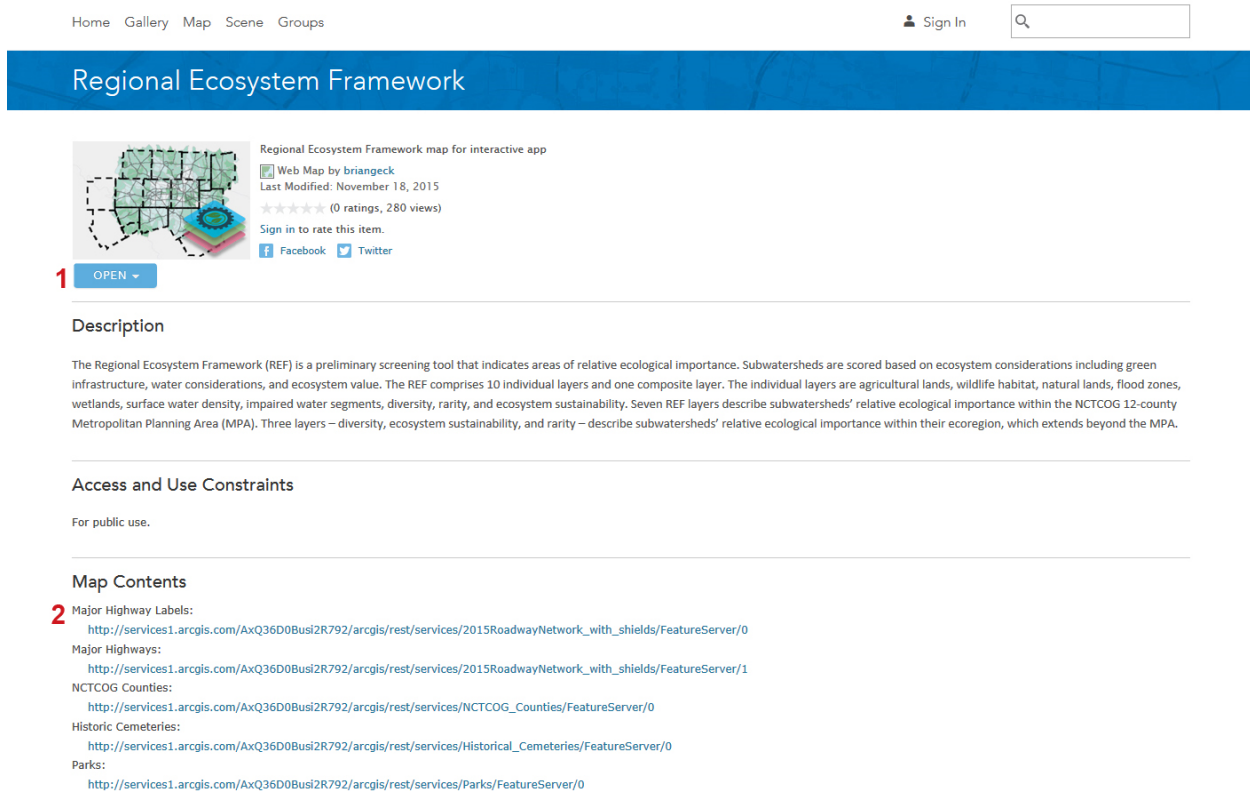
1. Add – Allows the user to add a layer to the map by entering a service URL or uploading a zipped shapefile. See Figure 3 below.
2. Layer Options – When “Modify Map” is selected, more options become available for editing layers.
 - a. Set Visibility range – Sets the zoom level at which layers become visible on the map.
*Note – there is a limit on the number of features that can be visible per layer at any given time. All layers by default are set to display at the greatest extent allowable.
 - b. Move Up/Move Down – changes layer order. *This can also be accomplished by clicking to the left of the layer check box and dragging up or down.
 - c. Rename – Changes the displayed name of the layer.
 - d. Remove – Removes the layer from the map.
 - e. Copy – Creates a copy of the layer and places the copy as the top layer.
 - f. Show/Hide in Legend – Toggle if the layer displays in the legend.
 - g. Enable Pop-up – Toggle the ability to view a pop-up bubble of metadata for a specific layer when clicked on the map.
 - h. Configure Pop-up – Opens pane to configure the data displayed in the layer’s pop-up bubble.
 - i. Create Labels – Opens panes to toggle layer labels and set the attribute to be used as a label.
 - j. Refresh Interval – This is not needed as the layers are static.
 - k. Show Item Details – view the details (data dictionary) and the service URL of that layer.
3. Save – If you have an ArcGIS account you can save your modified map for accessing later. If you are not logged in or do not have an ArcGIS account, all changes will be lost as soon as you close the browser.
4. New map – Opens a new, blank web map.

Figure 3: Uploading your own layers



*To upload your own layer(s) you will need to ZIP the shapefile prior to uploading.

Figure 4: Map Details Page



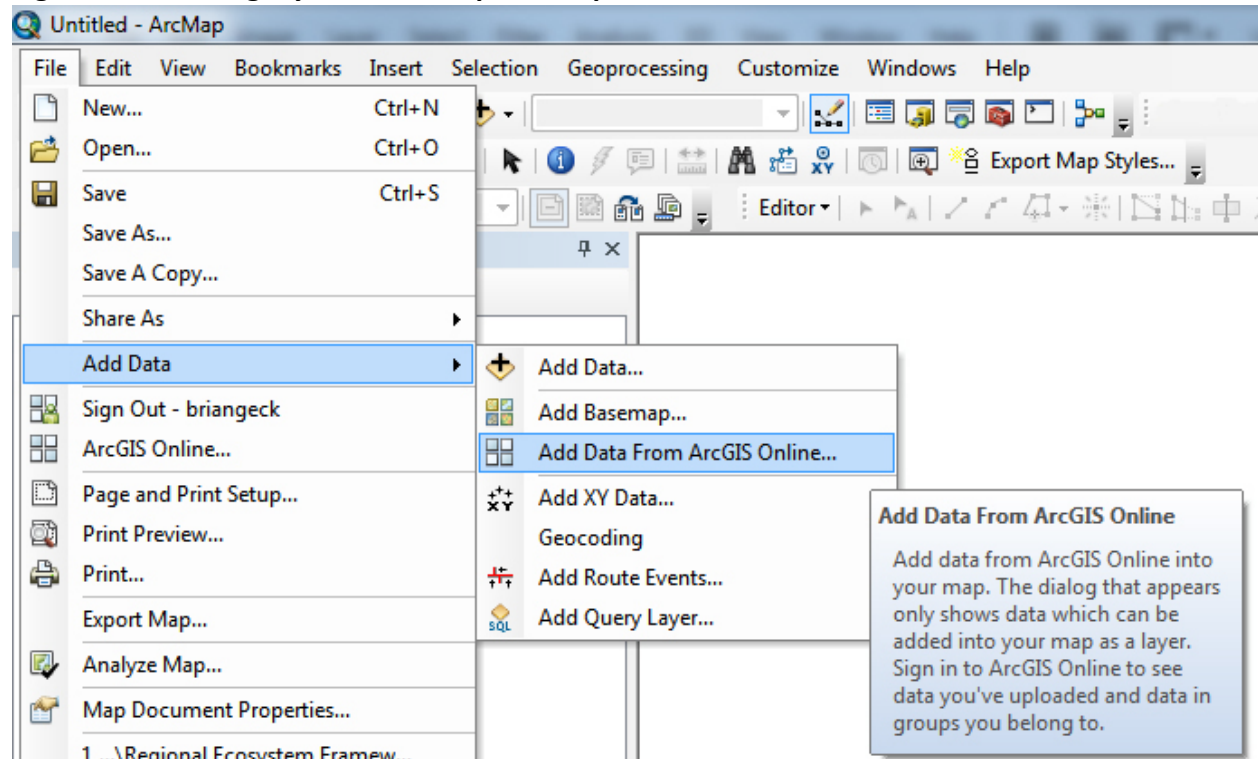
<http://www.arcgis.com/home/item.html?id=002b49952bbd4b1fa475c878ab1eebc0>

1. Open – Opens the map in the online map viewer
2. Map Contents – List of service URLs for all layers

3. ArcMap Desktop

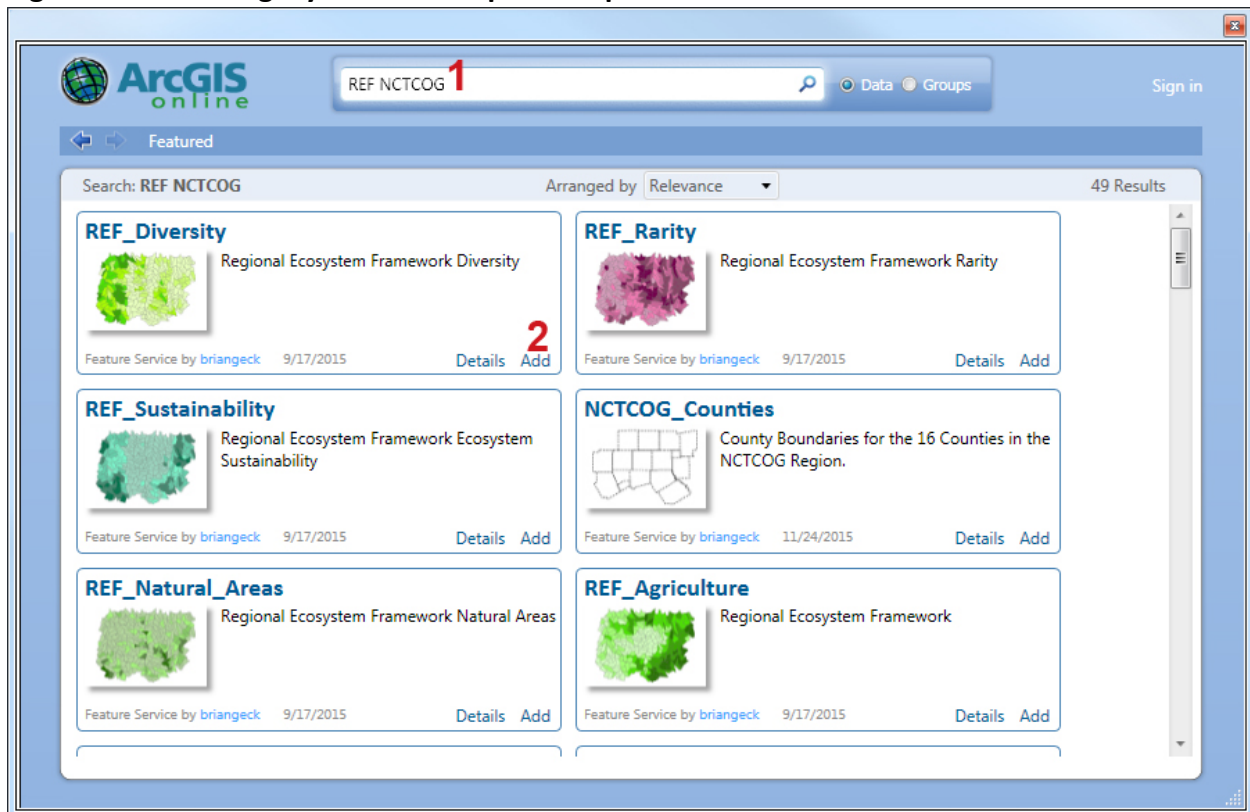
For full feature access as well as the ability to run analysis on layers, users can load the individual REF layers into ArcMap for Desktop. Layers can be added to existing project files or be used to create a new project file.

Figure 5: Accessing layers in ArcMap Desktop



To add an REF layer, click **File > Add Data > Add Data From ArcGIS Online...** > Type “REF NCTCOG” in the search box and click the search icon > Click “add” for each layer you would like to add to your map.

Figure 5b: Accessing layers in ArcMap Desktop



To add REF layers to your map, type “REF NCTCOG” in the search box then click “Add” for each layer you would like to place on your map.