

# Dallas County

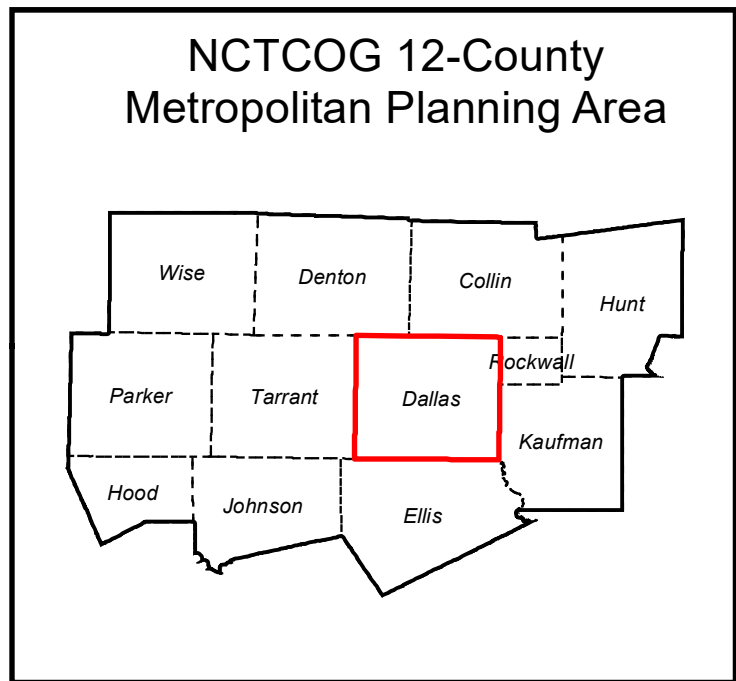
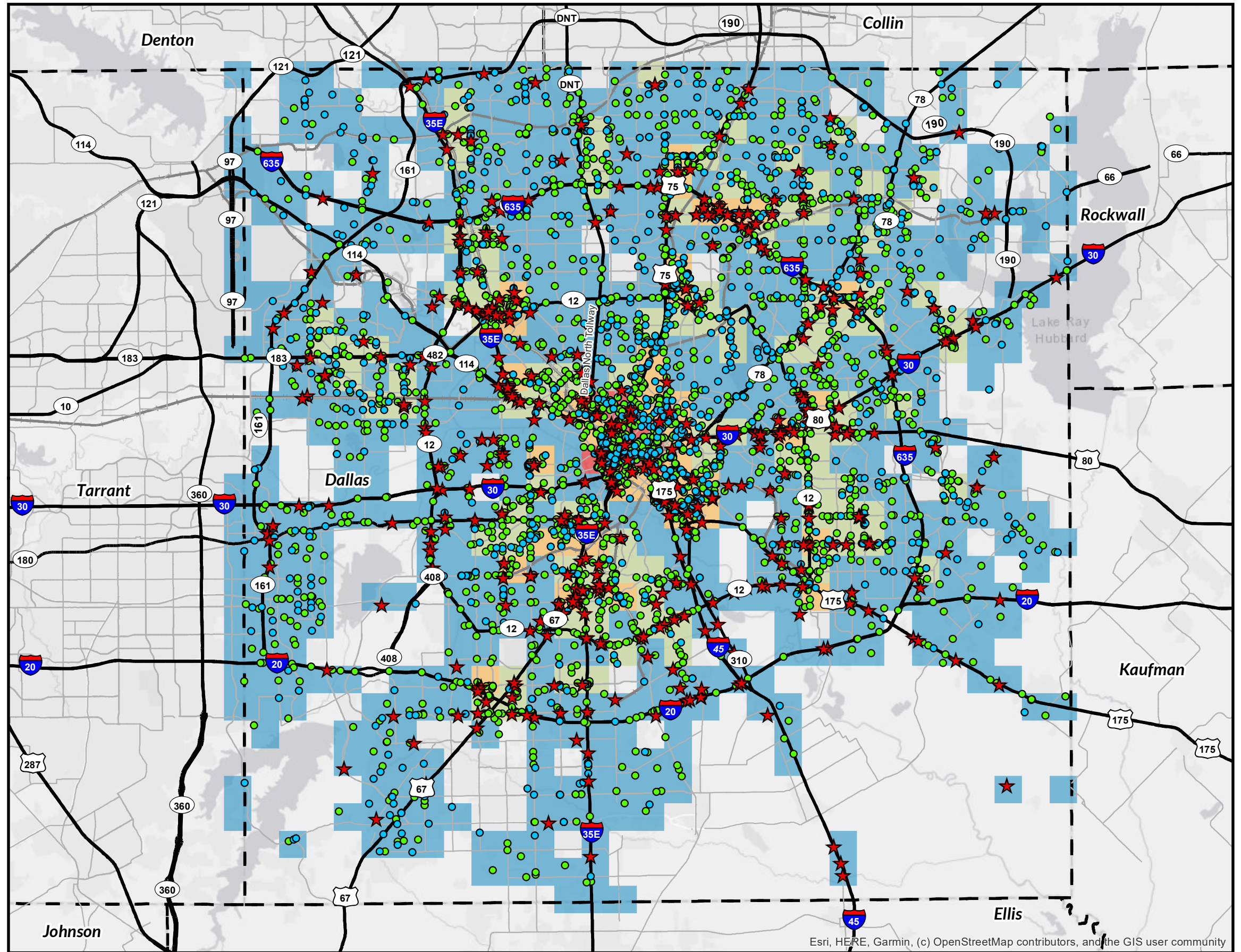
Bicycle and Pedestrian Crashes per Square Mile (2017 - 2021)

## Legend

- ★ Fatal Bicycle or Pedestrian Crash (423)
- Non-Fatal Bicycle Crash (1,036)
- Non-Fatal Pedestrian Crash (3,217)
- Highway
- Major Arterial Road
- Passenger Rail Line
- - - Counties

## Crashes per Square Mile

- 1 - 9
- 10 - 19
- 20 - 49
- 50+



Esri, HERE, Garmin, (c) OpenStreetMap contributors, and the GIS user community

Last Updated: 8/3/2022

1.) Source: TxDOT's Crash Records Information System: 2017-2021 data is current as of April 2022. All TxDOT disclaimers apply.  
 2.) Data displayed contains reportable crashes with latitude and longitude information. Additional crashes may have occurred.  
 3.) This data is composed of TxDOT "Reportable Crashes" that occurs or originates on a traffic way, results in injury to or death of any person, or damage to the property of any person to the apparent extent of \$1,000.

