

The American Red Cross Chisholm Trail Chapter

Feeding & Shelter Options
“What to do When”

Presented by John E. Apodaca
Director of Emergency Services



Mission of the American Red Cross



**American
Red Cross**

Together, we can save a life

The American Red Cross, a humanitarian organization, led by volunteers and guided by its congressional charter and the fundamental principles of the International Red Cross Movement, will provide relief to victims of disasters and help people prevent, prepare for and respond to emergencies.



Disaster Services: an overview



- Who does the Red Cross Serve
- Local response to disasters
- Mass Care Sheltering
- Disaster Welfare Inquiries (DWI's)
- Community Disaster Education (CDE's)

Local Response

- Provide immediate relief
- Providing emergency shelter needs
- Replace medical needs



What is Shelter in Place or Evacuate?

Shelter in Place



Evacuate

Sheltering

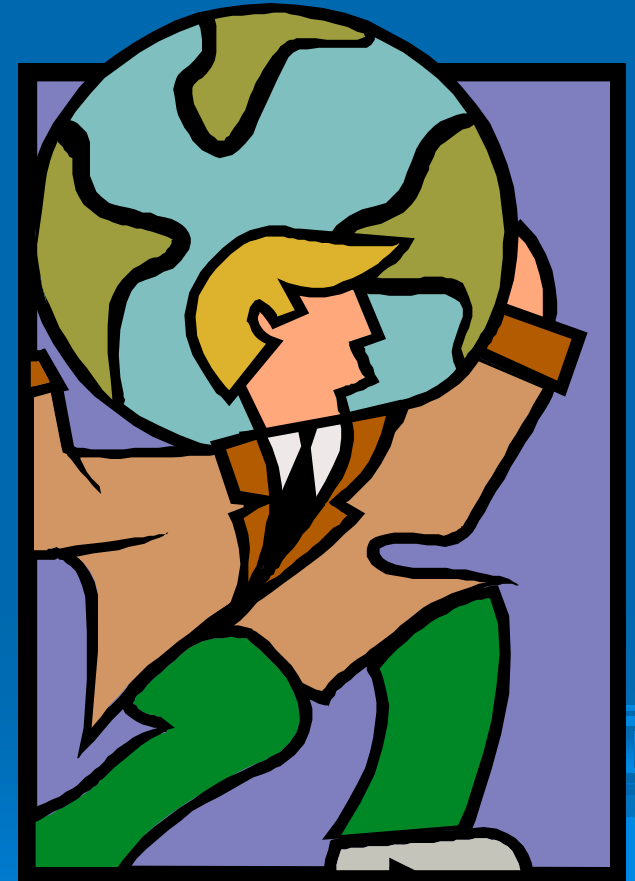


- How should you prepare?
- Identify shelters outside of affected areas
- Register evacuees
- Please keep in mind for your plan....



Identify Roles & Responsibilities

- Supervisor (s)
- Liaison
- Mental Health
- Communication
- Logistics



Mass Care (Feeding)

- Basic Commitment of
Mass Care



- Always keep in mind of the following:

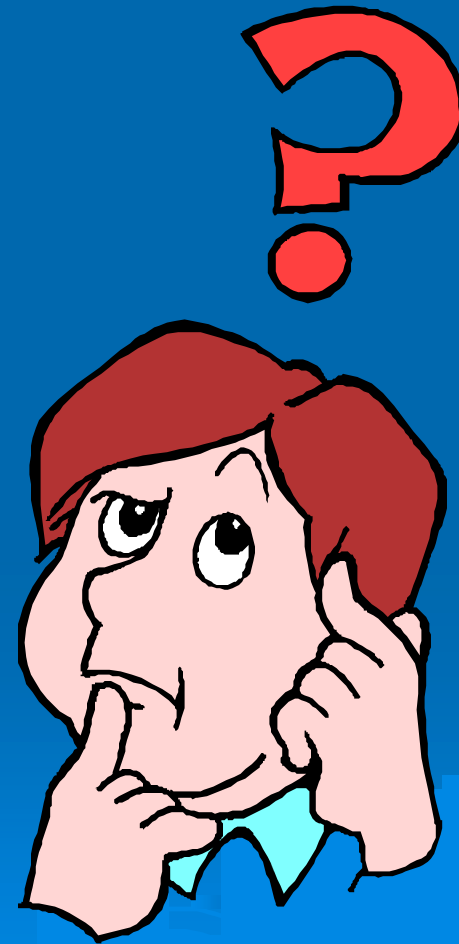


- Physical Needs
- Emotional Needs
- Informational Needs



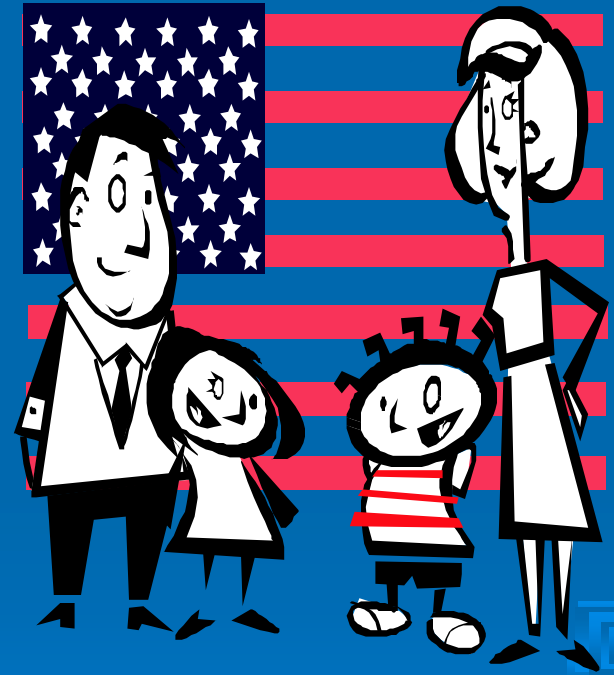
Things to Think About...

- Residents will ask...
- Bills
- Special Needs



Disaster Supply Kit

- Water
- Food
- Tools and Supplies
- Clothing and Bedding
- Special Items



Disaster Action Plan



- Area disasters
- Create a disaster plan
- Prepare
- Practice and Maintain Plan



Questions



**THANK
YOU!**