

# Hunt County

Bicycle and Pedestrian  
Crashes per Square Mile  
(2017 - 2021)

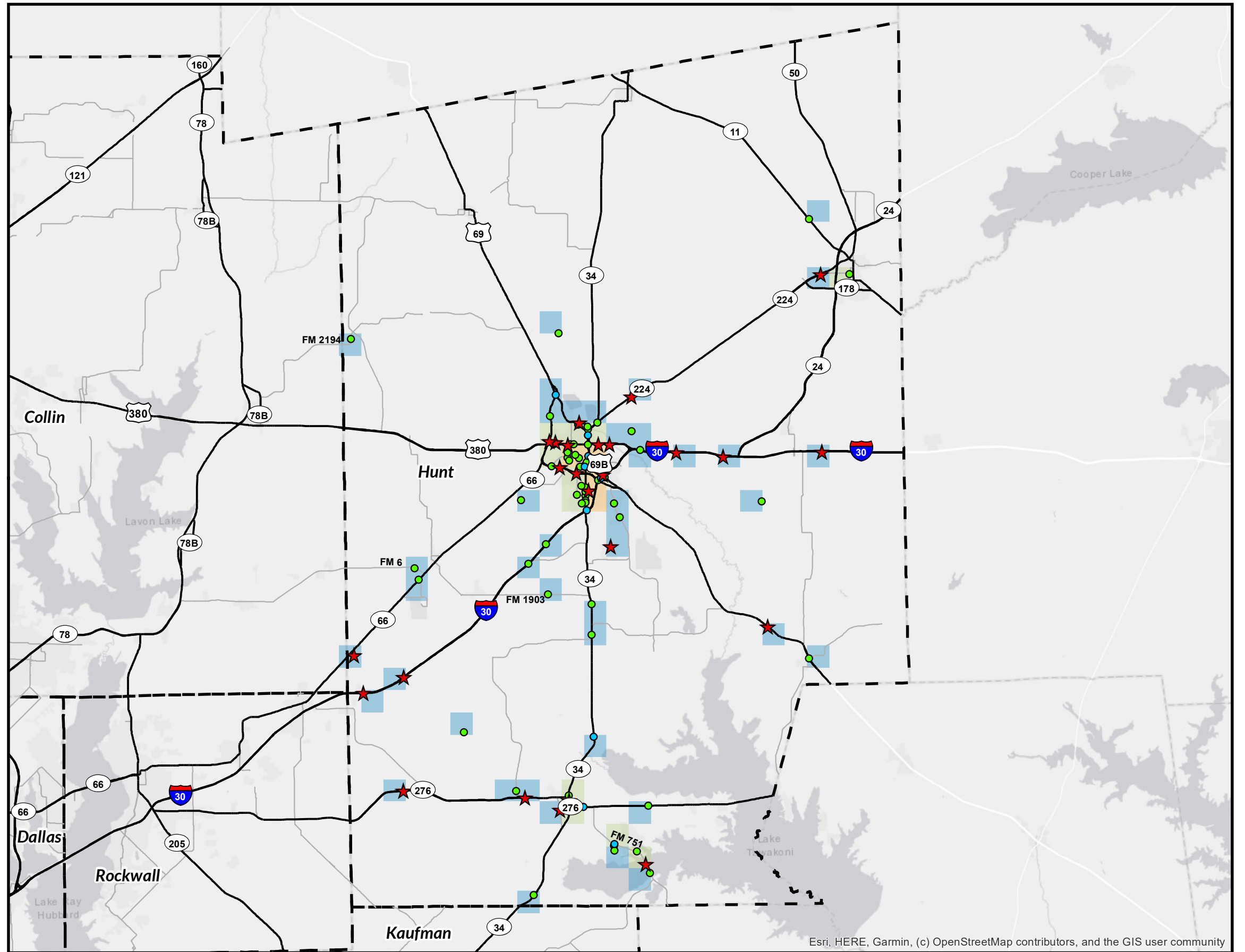
## Legend

- ★ Fatal Bicycle or Pedestrian Crash (25)
- Non-Fatal Bicycle Crash (11)
- Non-Fatal Pedestrian Crash (61)

- Highway
- Major Arterial Road
- Passenger Rail Line
- - - Counties

## Crashes per Square Mile

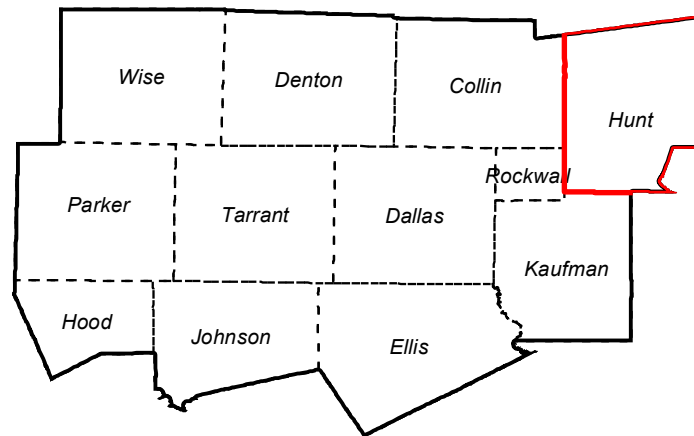
- 1
- 2 - 5
- 6 - 9
- 10+



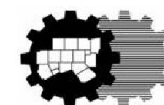
Esri, HERE, Garmin, (c) OpenStreetMap contributors, and the GIS user community

Last Updated: 8/2/2022

## NCTCOG 12-County Metropolitan Planning Area



- 1.) Source: TxDOT's Crash Records Information System: 2017-2021 data is current as of April 2022. All TxDOT disclaimers apply.
- 2.) Data displayed contains reportable crashes with latitude and longitude information. Additional crashes may have occurred.
- 3.) This data is composed of TxDOT "Reportable Crashes" that occurs or originates on a traffic way, results in injury to or death of any person, or damage to the property of any person to the apparent extent of \$1,000.



North Central Texas  
Council of Governments  
Transportation Department

