

Kaufman County

Bicycle and Pedestrian
Crashes per Square Mile
(2017 - 2021)

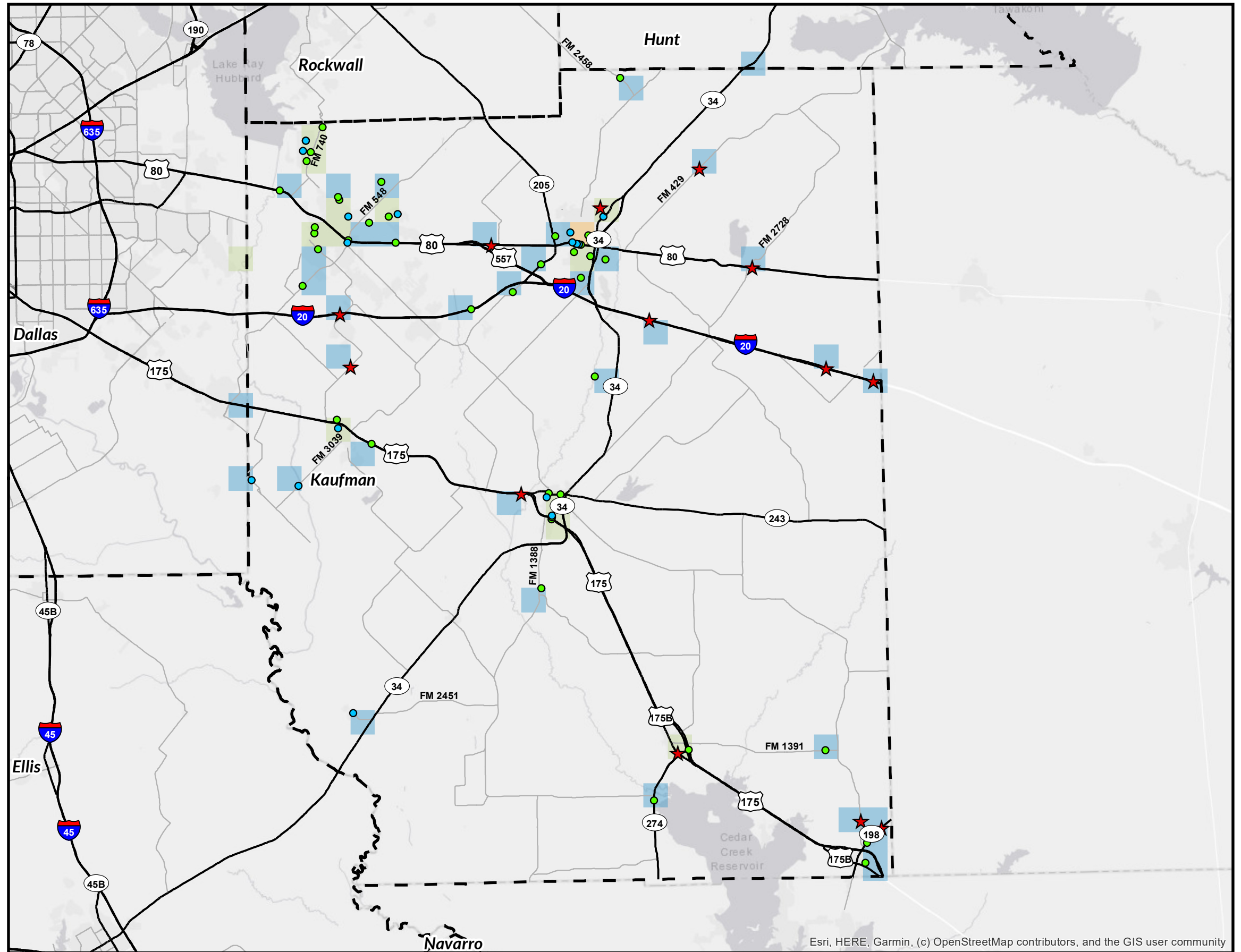
Legend

- ★ Fatal Bicycle or Pedestrian Crash (13)
- Non-Fatal Bicycle Crash (18)
- Non-Fatal Pedestrian Crash (43)

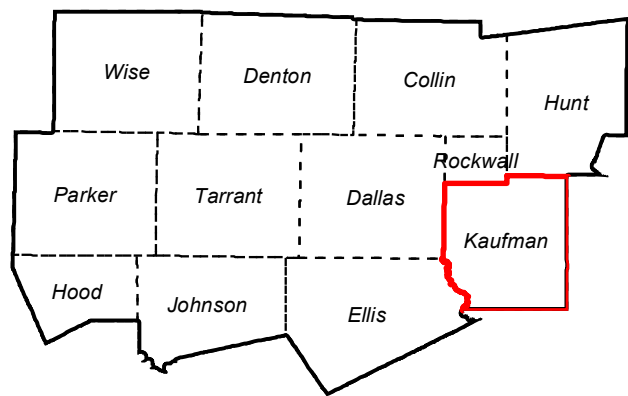
- Highway
- Major Arterial Road
- Passenger Rail Line
- - - Counties

Crashes per Square Mile

- 1
- 2 - 5
- 6 - 9
- 10+



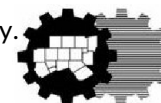
NCTCOG 12-County Metropolitan Planning Area



Esri, HERE, Garmin, (c) OpenStreetMap contributors, and the GIS user community

Last Updated: 8/3/2022

- 1.) Source: TxDOT's Crash Records Information System: 2017-2021 data is current as of April 2022. All TxDOT disclaimers apply.
- 2.) Data displayed contains reportable crashes with latitude and longitude information. Additional crashes may have occurred.
- 3.) This data is composed of TxDOT "Reportable Crashes" that occurs or originates on a traffic way, results in injury to or death of any person, or damage to the property of any person to the apparent extent of \$1,000.



North Central Texas
Council of Governments
Transportation Department

