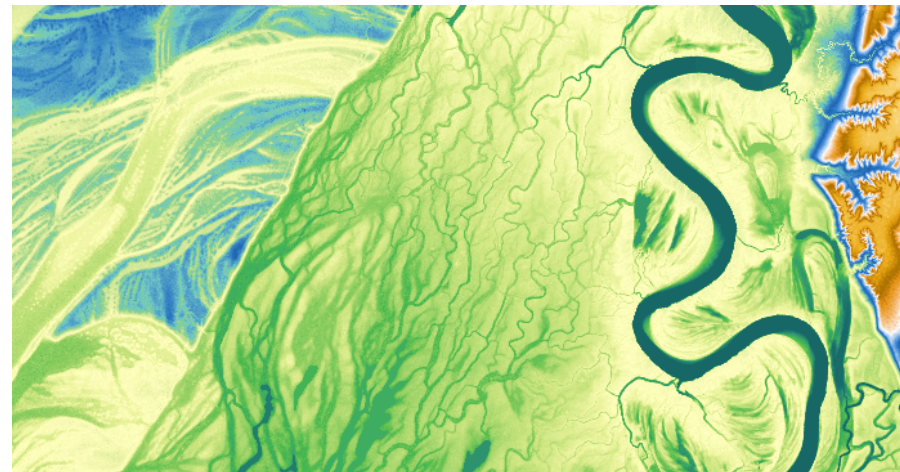


Regional GIS Meeting
Wednesday, May 13, 2015

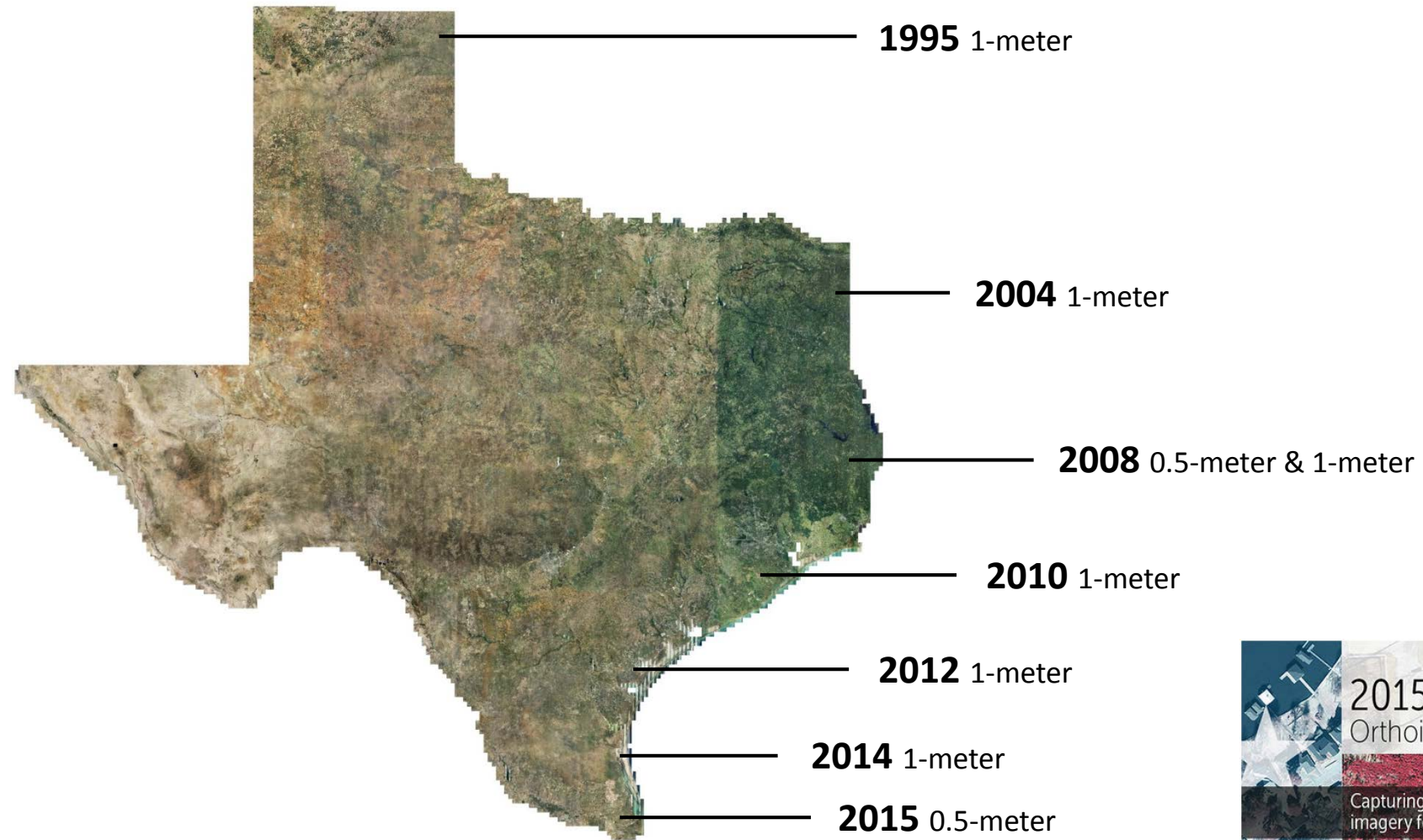


Imagery for Texas

Geographic
Data Acquisition Solutions
for Texas








History of Orthoimagery in Texas



2014/2015 Statewide Orthoimagery Project

TEXAS NATURAL RESOURCES INFORMATION SYSTEM PART OF THE TEXAS WATER DEVELOPMENT BOARD

 [Maps & Data](#)  [Programs](#)  [Geographic Information Office](#) [About](#)  [Contact Us](#)



2015 Statewide Orthoimagery Project
A collaborative initiative to capture high-quality, leaf-off imagery for the entire state, slated for public release in Winter 2015.

Texas Google Imagery Service PILOT PROJECT



- In response to popular interest
- Speed, reliability
- 1 & 3-year update cycles
- 6 inch resolution
- 2015 Texas Orthoimagery Project final costs resulted in big savings

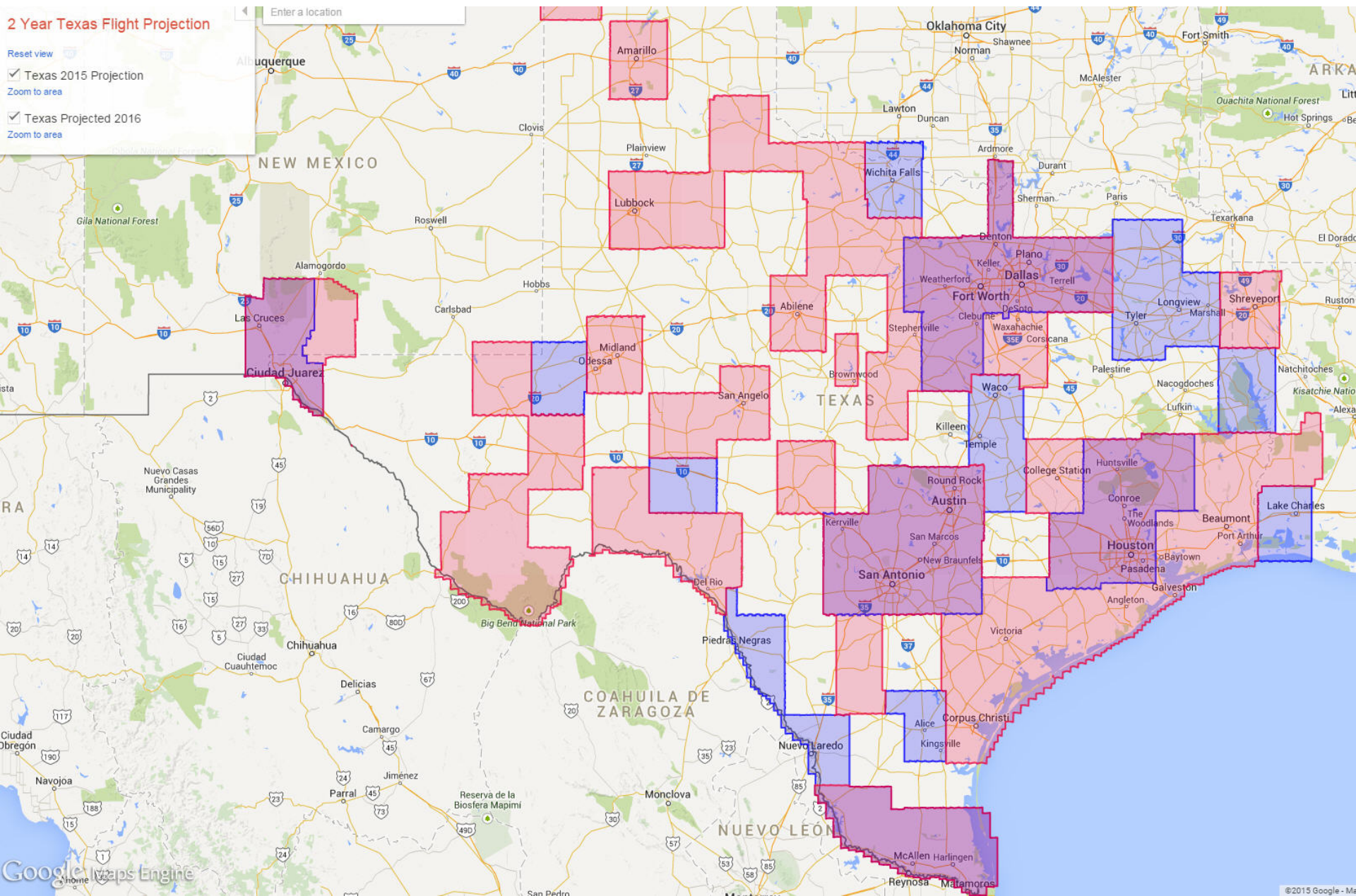
Texas Google Imagery Service PILOT PROJECT



- 2015 Pilot Year
- WMS & WMTS links
- 6-inch statewide
- Leaf-on/Leaf-off Mix
- 2015 Imagery Updates

2 Year Texas Flight Projection

- Reset view
- Texas 2015 Projection
- Zoom to area
- Texas Projected 2016
- Zoom to area



3DEP – 3D Elevation Program

The screenshot displays the SeaSketch web application interface. At the top, the browser address bar shows the URL <http://www.seasketch.org/#projecthomepage/5272840f6ec5f>. The page header includes the NOAA logo and text: "U.S. Federal Mapping Coordination" and "A Demonstration Site for Federal Mapping Data Acquisition Coordination". The SeaSketch logo is also present, along with navigation links for "take a tour", "help", and "Sign In".

The main map area shows a geographic region of Texas, including cities like Fort Worth, Dallas, and Austin. The map is overlaid with various data layers, including a prominent green grid pattern and yellow shaded areas. A search bar on the left side of the map contains the text "Convert" and "Select".

The right sidebar contains a "Data Layers" panel with the following sections:

- Data Layers** (selected)
- My Plans**
- Participate**

Below these tabs are buttons for "Data Layers", "Basemap", and "Legend & Ordering". A search bar is provided with the placeholder text "Search layers by name or keyword".

The sidebar lists several categories of mapping projects:

- Mapping Priorities: Needs, Requirements**
 - Areas of Interest (specifying of data types is optional)
- Proposed Mapping Projects**
 - 3DEP 3D Elevation Program Areas of Interest
 - NPS 3DEP Areas of Interest
 - FEMA 3DEP Areas of Interest
 - NOAA 3DEP Areas of Interest
 - USGS 3DEP Areas of Interest
 - USACE 3DEP Areas Of Interest
 - FWS 3DEP Areas of Interest
 - Public 3DEP Areas of Interest
 - National Coastal Mapping Strategy 1.0 Proposed Projects
 - Acoustic/Sonar (Hydro, Bathy, Water Column, etc) Proposed
 - Other
- Planned and Ongoing Mapping Projects**
 - Topographic Lidar
 - Topobathymetric Lidar
 - Acoustic/Sonar (Hydro, Bathy, Water Column, etc)
 - Digital Imagery
 - Other
- Alaska/Arctic Priorities, Proposed, Planned, Ongoing**
 - Alaska/Arctic
- Existing Data**
 - Existing Data (not complete; more due diligence necessary)
- UAS Pilot NERRS Grand Bay**
 - GRAND BAY NERR

The Esri logo is visible in the bottom right corner of the map area.

3DEP – 3D Elevation Program

3DEP - 3D Elevation Prog

https://www.geoplatform.gov/elevation/3DEP

Apps TNRIS Google Maps... WATER CODE CHAP... Cool Webmap Apps www.fgdc.gov/nsdi... IWEB Texas Water Develo... Piktochart : Make In... GPS Visualizer: Goo... Other bookmarks

GEOPLATFORM.gov fgdc Federal Geographic Data Committee

Overview | Data | Maps | Communities/Agencies | Resources | Marketplace | Dashboards | Sign In | Help

NGDA Elevation Theme Community

Home NGDA Datasets



3D Elevation Program (3DEP) FY15/16 Broad Agency Announcement (BAA) Information Sharing Site

What is 3DEP?

The U.S. Geological Survey (USGS) National Geospatial Program is developing the [3D Elevation Program](#) (3DEP) to respond to growing needs for high-quality topographic data and for a wide range of other three-dimensional (3D) representations of the Nation's natural and constructed features. The primary goal of 3DEP is to systematically collect 3D elevation data in the form of light detection and ranging (lidar) data over the conterminous United States, Hawaii, and the U.S. territories, with data acquired over an 8-year period. Interferometric synthetic aperture radar (ifsar) data will be acquired for Alaska, where cloud cover and remote locations preclude the use of lidar in much of the State. The 3DEP initiative is based on the results of the [National Enhanced Elevation Assessment](#) that documented more than 600 business uses across 34 Federal agencies, all 50 States, selected local government and Tribal offices, and private and nonprofit organizations. A fully funded and implemented 3DEP would provide more than \$690 million annually in new benefits to government entities, the private sector, and citizens.

Today, about \$50 million is invested annually in lidar and ifsar data by all public agencies, and the [U.S. Interagency Elevation Inventory](#) shows that only six percent of the lower 49 States and territories has lidar data that meet the quality levels needed. An additional \$96 million is needed annually to implement 3DEP. This would result in a nearly 5:1 return on investment, save lives, and improve our environment through informed decisions.

3DEP is a "[Call for Action](#)" because no one entity can accomplish it independently. 3DEP presents a unique opportunity for collaboration between all levels of government, to leverage the services and expertise of private sector mapping firms that acquire the data, and to create jobs now and in the future. When partners work together, they can achieve efficiencies and lower costs so that 3DEP can become a reality. When 3D elevation data are available to everyone, new innovations will occur in forest resource management, alternative energy, agriculture, and other industries for years to come.

To download 3DEP data visit: <http://nationalmap.gov/viewer.html>

3DEP Partnership Opportunities

[Attend a Public Meeting](#) - Learn more about how to apply for partnership funds or attend a workshop discussing proposed projects in your geographic area of interest

[View the Proposed Collection Areas](#) - Look for an opportunity to partner with Federal agency and other stakeholders on proposed projects in your geographic area of interest

[Propose an Area of Interest](#) - Share your plans and areas of interest with other stakeholders in your geographic area of interest

Contact Us | Data Policy | FAQ | Policies and Notices | Privacy Policy | Accessibility

TNRIS Updates



National Agriculture Imagery Program (NAIP) 2014 1m
NC\CIR

[Full Info](#)

Access via: [Data Search & Download](#) [Ordering](#)



2015 Statewide Orthoimagery Project

Capturing high-quality, leaf-off
imagery for the entire state.

ery F
ons ir

TEXAS **GIS** FORUM

October 26-29, 2015/ Austin, Texas



Save the Date!



2015 GEORODEO

The Annual Texas GeoDeveloper Roundup
May 22nd, 2015 | Austin, Texas



[More about the GeoRodeo](#)

Thank you!

Gayla Mullins

Remote Sensing Specialist
gayla.mullins@twdb.texas.gov
512.463.7104

Felicia Retiz

Deputy GIO
felicia.retiz@twdb.texas.gov
512.463.8862

