



**Superbowl XLV Preparedness
at the City of Fort Worth**
Robin Britton, GIS Lead



Background

- City of Fort Worth has an Enterprise GIS with the core infrastructure supported by the IT Department
 - SDE Databases
 - Internet Servers, ArcIMS & ArcGIS Server
 - Terminal Services GIS
 - License Server
 - Support Line
- Departmental GIS staff complete specialized functions particular to their department

Emergency Mapping Team supports EOC events and is composed of users from all departments

Fire, TPW-Streets, TPW-Stormwater, TPW-Env, IT, Water, & Police



So, how is all this going to work?

- New JEOC was being constructed in preparation for Superbowl XLV
- GIS planning for the event began in October 2010

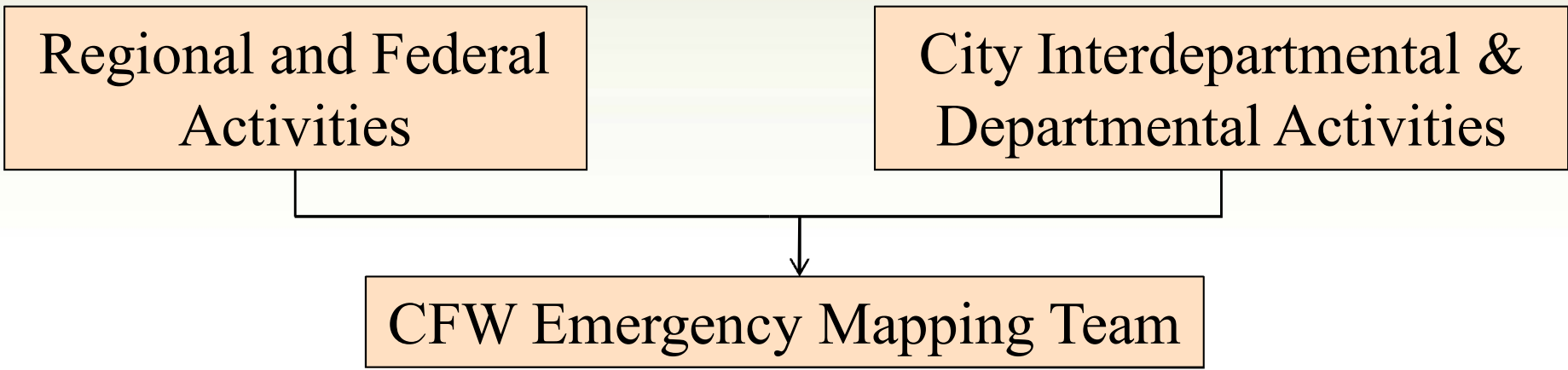
Questions

1. How will city/regional/federal coordination work?
2. How will things be organized internally to the City of Fort Worth?
3. What kinds of technology and data do we have, need to acquire or develop?
4. What are the possible scenarios we need to prepare for?



City/Regional Coordination

- CFW Emergency Mapping Team coordination was run by Betsi Chatham & Doug Zedler
- City Interdepartmental coordination by Robin Britton with input from all members of the Emergency Mapping Team
- Regional and Federal coordination by Robin Britton was relayed back to mapping team



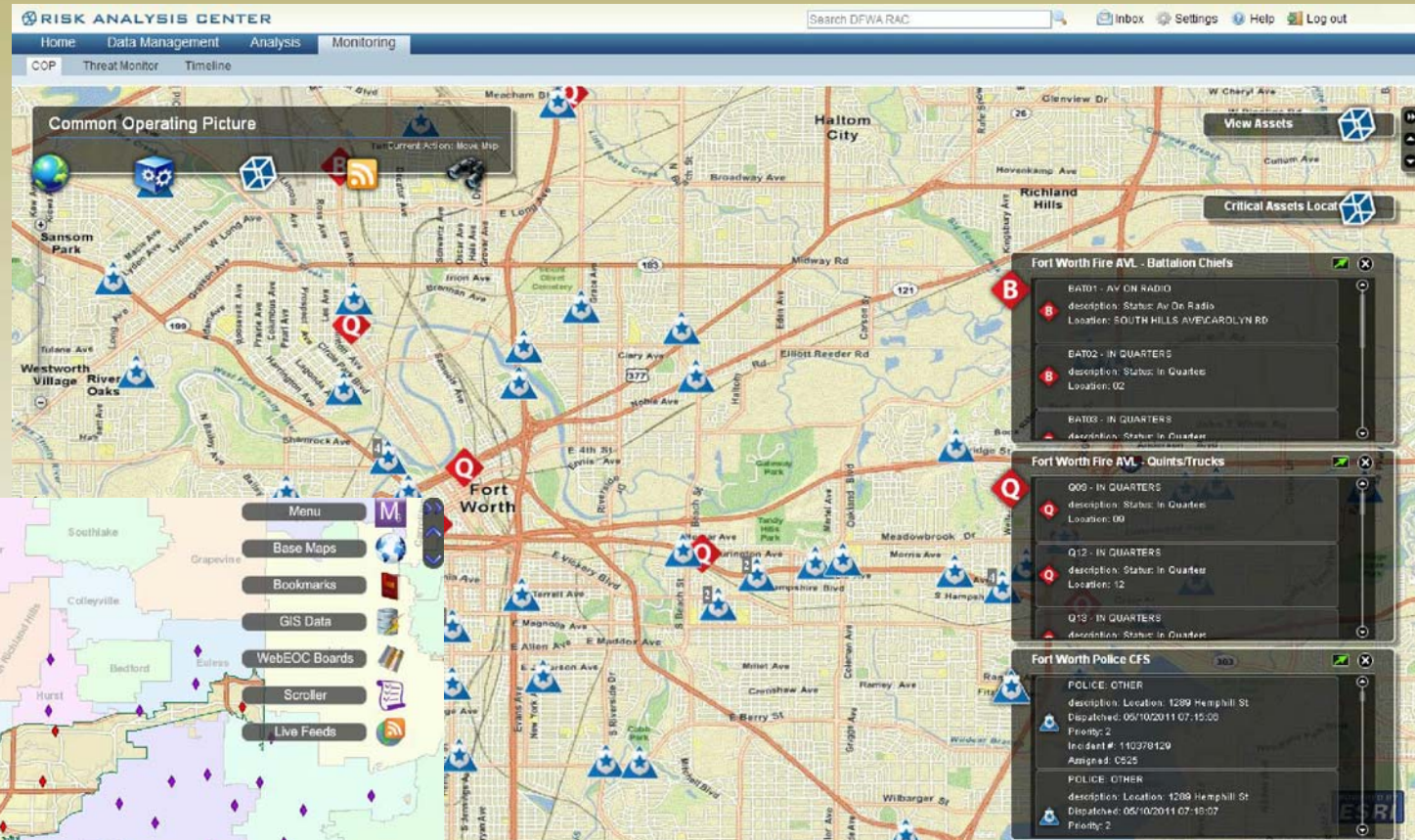


Mapping Team Preparedness

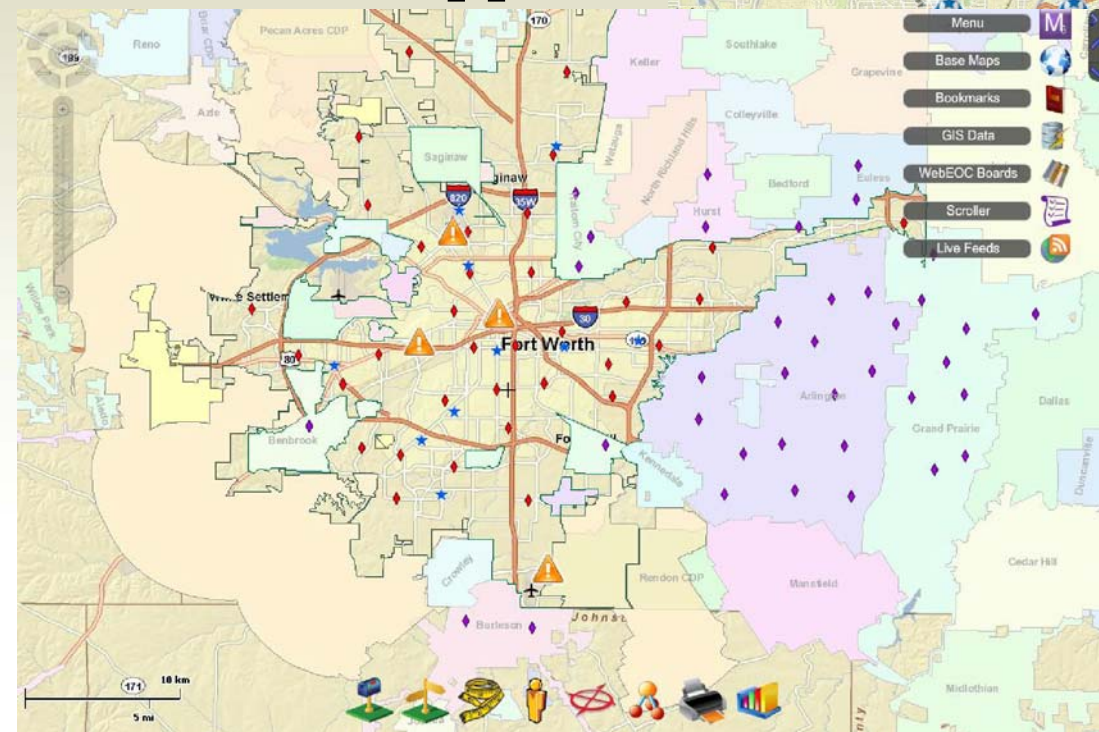
- Setup a central repository for data with security
- Setup schedule to work once the EOC was activated
- Setup task reporting sheet for data and knowledge transfers between shifts
- All mapping team members were NIMS trained in ICS
- Had periodic meetings as the JEOC was completed
- Participated in the Cottonbowl Exercise as a trial run for Superbowl preparations
- Developed cheat sheet of printer names, directory structure, web links, critical contacts and other relevant data
- Made sure everyone had security setup on their ID badge for entrance to needed areas

Software Implementations

Digital Sandbox
Risk Analysis
Center (RAC)



WebEOC Mapper



Also implemented maps for
Esponder and E-Team

More Software

SharePoint site setup for JEOC for incident coordination

Home - Windows Internet Explorer

Welcome Britton, Robin | This Site

JOINT EMERGENCY OPERATIONS CENTER

Home JEOC WEBSITES TUNER LINKS

View All Site Content

Pictures

- JEOC Graphics
- JEOC Construction Photos
- Weather Event Pictures
- Super Bowl XLV JEOC Activation

Documents

- Shared Documents
- JEOC Web page library
- JEOC diagram and layout (development)
- Archives
- Softphone JEOC Lines

Lists

- Calendar
- Tasks
- Links
- JEOC Contact List
- V. Brick Tuner URLs

Discussions

- Team Discussion

Sites

People and Groups

Recycle Bin

This site is designed to support content for (JEOC) Joint Emergency Operations Center (CITY-COUNTY-STATE-FEDERAL)

Shared Documents

Type	Name	Modified By
Folder	Network Access	Gomez, Carlos E
Folder	JEOC Assignment Locator	Ortiz, Juan M.
Folder	Frequently Asked Questions	Gomez, Carlos E
Folder	Incident Action Plan	Westerman, Randy
Folder	JEOC Community Agencies	Ortiz, Juan M.
Folder	DCC-4	Ortiz, Juan M.
Folder	TCEOC	Ortiz, Juan M.
Folder	CFWEOC	Ortiz, Juan M.
Folder	JEOC Job Aides	Gomez, Carlos E

Add new document

Calendar

5/11/2011 2:30 PM	Response Capability Committee Meeting - IC Training Room - 129 Hosted by Wendell Lancaster
5/13/2011 11:00 AM	Homeland Security Project Eval Mtg - Executive Conf Room POC: Eric Carter

Links

- County Emergency Management
- Texas Division of Emergency Management
- FEMA-Federal Emergency Management Agency
- City of Fort Worth Emergency Management Office
- Tarrant County Dashboard
- WEBEOC
- Buyspeed
- Esponder
- IT ONLINE
- GIGIA
- Digital Sandbox
- E TEAM
- Technical Issues (IT ONLY)
- CFW Email
- Tarrant County Email
- JEOC Chair Adjustment Instructional Videos
- Monitor Arm Adjustment Instructional Video
- Fire Department CAD Visinet Interface
- Digital Sandbox
- LOCAL WEATHER

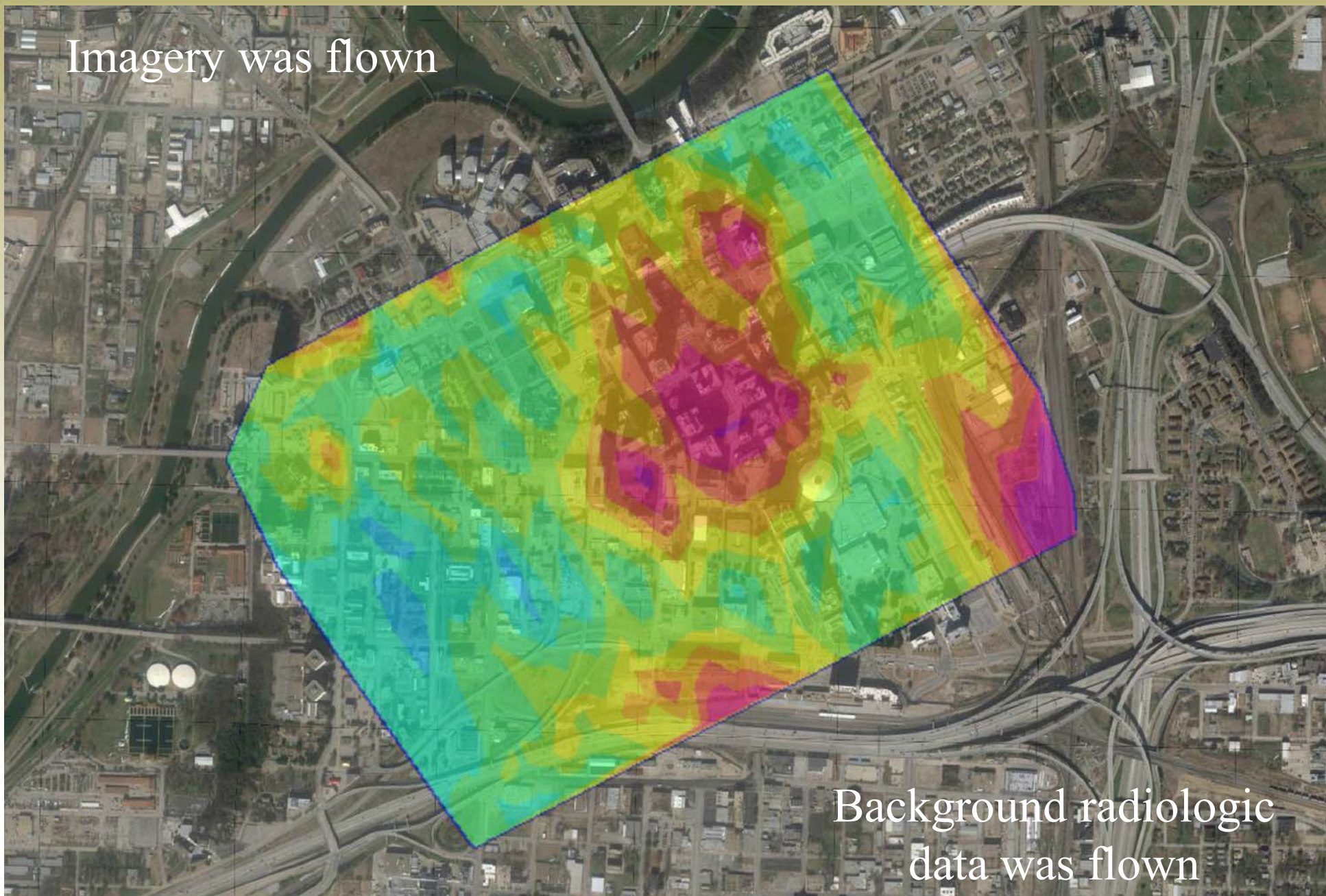
(More Links...)

Add new link

Local intranet 100%

We had cool data, we were prepared.

Imagery was flown



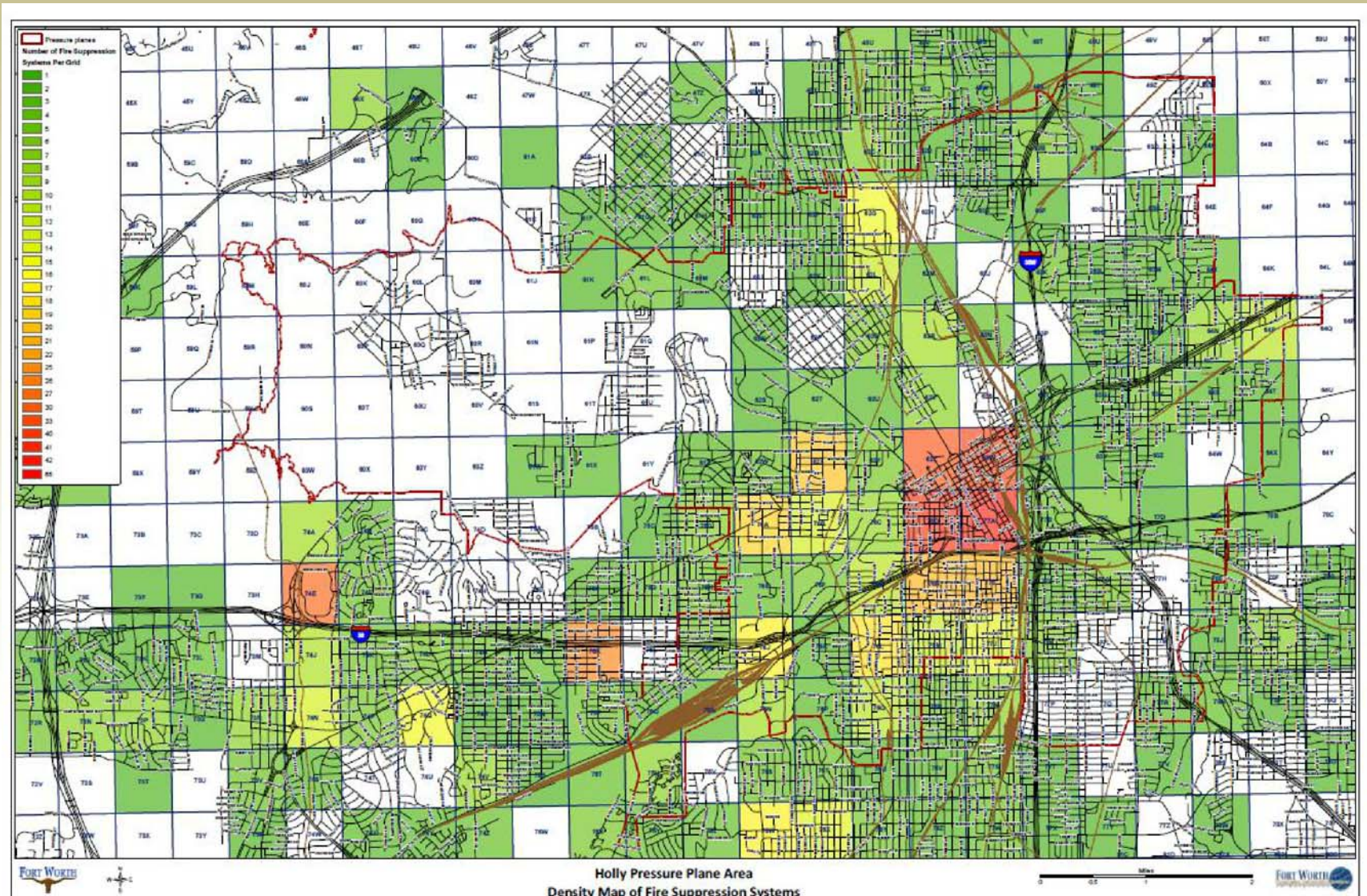
Background radiologic
data was flown

Then there was that little ice storm...

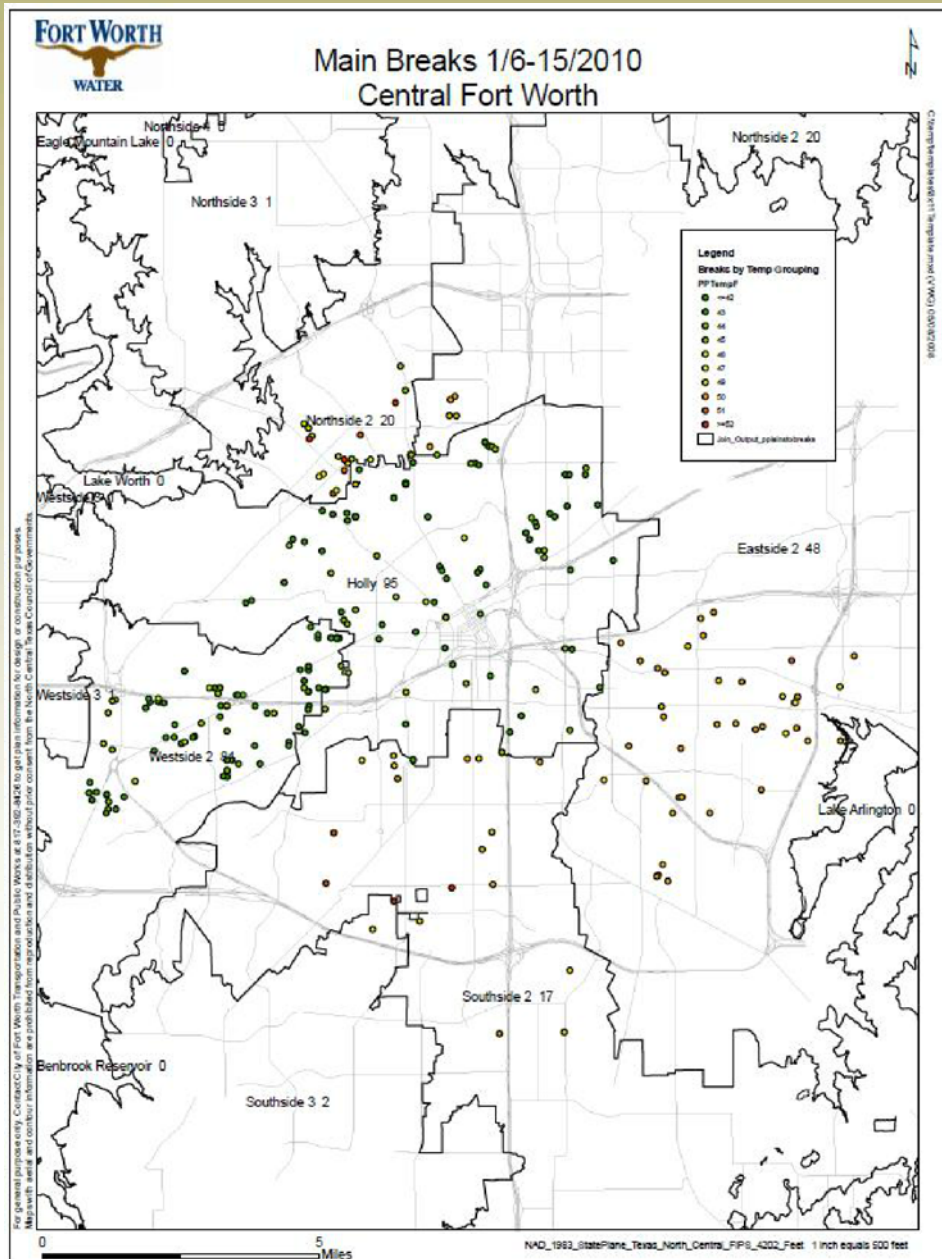


Weather Issues

There were concerns about fire suppression systems affected by the freezing temperatures



More Weather Issues



Historical data was pulled on known water main breaks by temperature in an effort to forecast potential problems

Sanding route maps developed as part of planning were modified as needed

Eventually we thawed out





What did we learn from all this

- ❑ Having a communication structure simplified getting information to everyone
- ❑ The diverse nature of the Mapping Team has helped to build strong relationships within the departments
- ❑ Having a centralized location for data and documents helped to avoid duplication of effort
- ❑ Encouraging a climate of information sharing helps everyone
- ❑ Start with a plan but be ready to adapt should a large ice storm descend on your area !





Questions ?

Robin.Britton@fortworthgov.org

817.392.8861